



WDFY1 rabbit pAb

Cat No.:ES11743

For research use only

Overview

Product Name	WDFY1 rabbit pAb
Host species	Rabbit
Applications	WB;ELISA
Species Cross-Reactivity	Human;Rat;Mouse;
Recommended dilutions	WB 1:500-2000 ELISA 1:5000-20000
Immunogen	Synthesized peptide derived from part region of human protein
Specificity	WDFY1 Polyclonal Antibody detects endogenous levels of protein.
Formulation	Liquid in PBS containing 50% glycerol, 0.5% BSA and 0.02% sodium azide.
Storage	Store at -20°C. Avoid repeated freeze-thaw cycles.
Protein Name	WD repeat and FYVE domain-containing protein 1 (FENS-1) (Phosphoinositide-binding protein 1) (WD40- and FYVE domain-containing protein 1) (Zinc finger FYVE domain-containing protein 17)
Gene Name	WDFY1 KIAA1435 WDF1 ZFYVE17
Cellular localization	Early endosome .
Purification	The antibody was affinity-purified from rabbit antiserum by affinity-chromatography using epitope-specific immunogen.
Clonality	Polyclonal
Concentration	1 mg/ml
Observed band	45kD
Human Gene ID	57590
Human Swiss-Prot Number	Q8IWB7
Alternative Names	
Background	The protein encoded by this gene is a phosphatidylinositol 3-phosphate binding protein, which contains a FYVE zinc finger domain and multiple WD-40 repeat domains. When exogenously expressed, it localizes to early endosomes. Mutagenesis analysis demonstrates that this

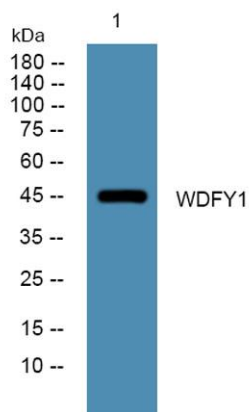




ELK Biotechnology

endosomal localization is mediated by the FYVE domain. [provided by RefSeq, Jan 2015],

Western blot analysis of lysates from A431 cells, primary antibody was diluted at 1:1000, 4° over night



+86-27-59760950

ELKbio@ELKbiotech.com

www.elkbiotech.com

23-2, No.388 Gaoxin 2nd Road, Wuhan East Lake Hi-tech Development Zone, Hubei, P.R.C