



NPY6R rabbit pAb

Cat No.:ES11735

For research use only

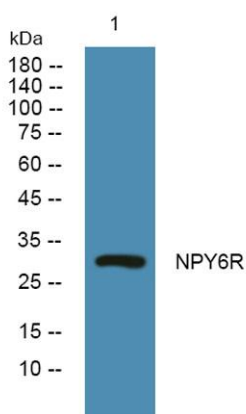
Overview

Product Name	NPY6R rabbit pAb
Host species	Rabbit
Applications	WB;ELISA
Species Cross-Reactivity	Human;Mouse
Recommended dilutions	WB 1:500-2000 ELISA 1:5000-20000
Immunogen	Synthesized peptide derived from human protein . at AA range: 190-270
Specificity	NPY6R Polyclonal Antibody detects endogenous levels of protein.
Formulation	Liquid in PBS containing 50% glycerol, 0.5% BSA and 0.02% sodium azide.
Storage	Store at -20°C. Avoid repeated freeze-thaw cycles.
Protein Name	Putative neuropeptide Y receptor type 6 (NPY6-R) (NPY Y1-like receptor) (Putative pancreatic polypeptide receptor 2) (PP2)
Gene Name	NPY6R NPY1RL Y2B
Cellular localization	Membrane ; Multi-pass membrane protein .
Purification	The antibody was affinity-purified from rabbit antiserum by affinity-chromatography using epitope-specific immunogen.
Clonality	Polyclonal
Concentration	1 mg/ml
Observed band	31kD
Human Gene ID	
Human Swiss-Prot Number	Q99463
Alternative Names	
Background	caution:Could be the product of a pseudogene. According to PubMed:97066888, PubMed:97066971 and PubMed:9013614, the human NPY6R gene is an expressed pseudogene containing a premature stop codon and encoding a non-functional truncated protein missing the last transmembrane domain. A single base pair deletion relative to the mouse





ortholog, results in a truncated protein lacking the seventh transmembrane domain.,function:When expressed, is unable to bind pancreatic polypeptide (PP), neuropeptide Y (NPY), or peptide YY (PYY), suggesting that either it is functionally inactive or that it may have acquired a pancreatic polypeptide-independent function.,similarity:Belongs to the G-protein coupled receptor 1 family.,tissue specificity:Expressed in heart, skeletal muscle, gastrointestinal tissues, spleen, brain and adrenal glands.,



Western blot analysis of lysates from K562 cells, primary antibody was diluted at 1:1000, 4° over night

