



# OR2F1 rabbit pAb

Cat No.:ES11698

For research use only

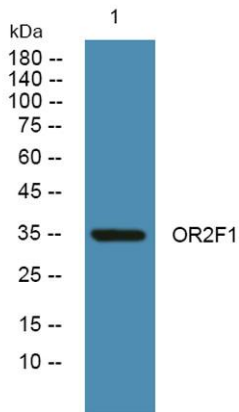
## Overview

<b>Product Name</b>	OR2F1 rabbit pAb
<b>Host species</b>	Rabbit
<b>Applications</b>	WB;ELISA
<b>Species Cross-Reactivity</b>	Human;Rat;Mouse;
<b>Recommended dilutions</b>	WB 1:500-2000 ELISA 1:5000-20000
<b>Immunogen</b>	Synthesized peptide derived from human protein . at AA range: 170-250
<b>Specificity</b>	OR2F1 Polyclonal Antibody detects endogenous levels of protein.
<b>Formulation</b>	Liquid in PBS containing 50% glycerol, 0.5% BSA and 0.02% sodium azide.
<b>Storage</b>	Store at -20°C. Avoid repeated freeze-thaw cycles.
<b>Protein Name</b>	Olfactory receptor 2F1 (Olfactory receptor 2F3) (Olfactory receptor 2F4) (Olfactory receptor 2F5) (Olfactory receptor-like protein OLF3)
<b>Gene Name</b>	OR2F1 OLF3 OR2F3 OR2F3P OR2F4 OR2F5
<b>Cellular localization</b>	Cell membrane; Multi-pass membrane protein.
<b>Purification</b>	The antibody was affinity-purified from rabbit antiserum by affinity-chromatography using epitope-specific immunogen.
<b>Clonality</b>	Polyclonal
<b>Concentration</b>	1 mg/ml
<b>Observed band</b>	34kD
<b>Human Gene ID</b>	26211
<b>Human Swiss-Prot Number</b>	Q13607
<b>Alternative Names</b>	
<b>Background</b>	Olfactory receptors interact with odorant molecules in the nose, to initiate a neuronal response that triggers the perception of a smell. The olfactory receptor proteins are members of a large family of G-protein-coupled receptors (GPCR) arising from single coding-exon genes. Olfactory receptors share a 7-transmembrane domain structure with many





neurotransmitter and hormone receptors and are responsible for the recognition and G protein-mediated transduction of odorant signals. The olfactory receptor gene family is the largest in the genome. The nomenclature assigned to the olfactory receptor genes and proteins for this organism is independent of other organisms. This olfactory receptor gene is a segregating pseudogene, where some individuals have an allele that encodes a functional olfactory receptor, while other individuals have an allele encoding a



Western blot analysis of lysates from HCT116 cells,  
primary antibody was diluted at 1:1000, 4° over night

