



LT4R2 rabbit pAb

Cat No.:ES11654

For research use only

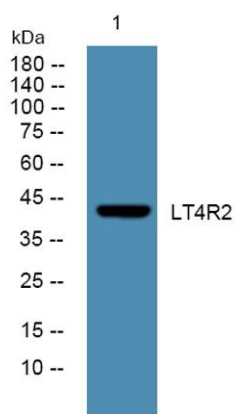
Overview

Product Name	LT4R2 rabbit pAb
Host species	Rabbit
Applications	WB;ELISA
Species Cross-Reactivity	Human;Rat;Mouse
Recommended dilutions	WB 1:500-2000 ELISA 1:5000-20000
Immunogen	Synthesized peptide derived from human protein . at AA range: 290-370
Specificity	LT4R2 Polyclonal Antibody detects endogenous levels of protein.
Formulation	Liquid in PBS containing 50% glycerol, 0.5% BSA and 0.02% sodium azide.
Storage	Store at -20°C. Avoid repeated freeze-thaw cycles.
Protein Name	Leukotriene B4 receptor 2 (LTB4-R 2) (LTB4-R2) (LTB4 receptor JULF2) (Leukotriene B4 receptor BLT2) (Seven transmembrane receptor BLTR2)
Gene Name	LTB4R2 BLT2R BLTR2
Cellular localization	Cell membrane; Multi-pass membrane protein.
Purification	The antibody was affinity-purified from rabbit antiserum by affinity-chromatography using epitope-specific immunogen.
Clonality	Polyclonal
Concentration	1 mg/ml
Observed band	42kD
Human Gene ID	56413
Human Swiss-Prot Number	Q9NPC1
Alternative Names	
Background	caution:It is uncertain whether Met-1 or Met-32 is the initiator.,function:Low-affinity receptor for leukotrienes including leukotriene B4. Mediates chemotaxis of granulocytes and macrophages. The response is mediated via G-proteins that activate a phosphatidylinositol-calcium second messenger system. The rank order of affinities for the





leukotrienes is LTB4 > 12-epi-LTB4 > LTB5 > LTB3.,similarity:Belongs to the G-protein coupled receptor 1 family.,tissue specificity:Widely expressed.,



Western blot analysis of lysates from K562 cells, primary antibody was diluted at 1:1000, 4° over night

