



# T2R60 rabbit pAb

Cat No.:ES11637

For research use only

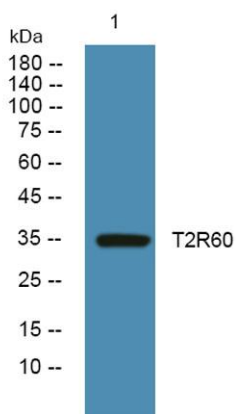
## Overview

|                                 |  |
|---------------------------------|--|
| <b>Product Name</b>             | T2R60 rabbit pAb   |
| <b>Host species</b>             | Rabbit   |
| <b>Applications</b>             | WB;ELISA   |
| <b>Species Cross-Reactivity</b> | Human;Rat;Mouse;   |
| <b>Recommended dilutions</b>    | WB 1:500-2000 ELISA 1:5000-20000   |
| <b>Immunogen</b>                | Synthesized peptide derived from human protein .<br>at AA range: 160-240   |
| <b>Specificity</b>              | T2R60 Polyclonal Antibody detects endogenous<br>levels of protein.   |
| <b>Formulation</b>              | Liquid in PBS containing 50% glycerol, 0.5% BSA and<br>0.02% sodium azide.   |
| <b>Storage</b>                  | Store at -20°C. Avoid repeated freeze-thaw cycles.   |
| <b>Protein Name</b>             | Taste receptor type 2 member 60 (T2R60) (Taste<br>receptor type 2 member 56) (T2R56)   |
| <b>Gene Name</b>                | TAS2R60  |
| <b>Cellular localization</b>    | Membrane; Multi-pass membrane protein.   |
| <b>Purification</b>             | The antibody was affinity-purified from rabbit<br>antiserum by affinity-chromatography using<br>epitope-specific immunogen.  |
| <b>Clonality</b>                | Polyclonal   |
| <b>Concentration</b>            | 1 mg/ml  |
| <b>Observed band</b>            | 34kD   |
| <b>Human Gene ID</b>            | 338398   |
| <b>Human Swiss-Prot Number</b>  | P59551   |
| <b>Alternative Names</b>        |  |
| <b>Background</b>               | function:Receptor that may play a role in the<br>perception of bitterness and is gustducin-linked.<br>May play a role in sensing the chemical composition<br>of the gastrointestinal content. The activity of this<br>receptor may stimulate alpha gustducin, mediate<br>PLC-beta-2 activation and lead to the gating of<br>TRPM5.,miscellaneous:Most taste cells may be<br>activated by a limited number of bitter compounds; |





individual taste cells can discriminate among bitter stimuli.,similarity:Belongs to the G-protein coupled receptor T2R family.,tissue specificity:Expressed in subsets of taste receptor cells of the tongue and exclusively in gustducin-positive cells.,



Western blot analysis of lysates from SW480 cells, primary antibody was diluted at 1:1000, 4°over night

