



LPAR6 rabbit pAb

Cat No.:ES11621

For research use only

Overview

Product Name	LPAR6 rabbit pAb
Host species	Rabbit
Applications	WB;ELISA
Species Cross-Reactivity	Human;Rat;Mouse
Recommended dilutions	WB 1:500-2000 ELISA 1:5000-20000
Immunogen	Synthesized peptide derived from human protein . at AA range: 70-150
Specificity	LPAR6 Polyclonal Antibody detects endogenous levels of protein.
Formulation	Liquid in PBS containing 50% glycerol, 0.5% BSA and 0.02% sodium azide.
Storage	Store at -20°C. Avoid repeated freeze-thaw cycles.
Protein Name	Lysophosphatidic acid receptor 6 (LPA receptor 6) (LPA-6) (Oleoyl-L-alpha-lysophosphatidic acid receptor) (P2Y purinoceptor 5) (P2Y5) (Purinergic receptor 5) (RB intron encoded G-protein coupled recep
Gene Name	LPAR6 P2RY5
Cellular localization	Cell membrane ; Multi-pass membrane protein .
Purification	The antibody was affinity-purified from rabbit antiserum by affinity-chromatography using epitope-specific immunogen.
Clonality	Polyclonal
Concentration	1 mg/ml
Observed band	37kD
Human Gene ID	10161
Human Swiss-Prot Number	P43657
Alternative Names	
Background	lysophosphatidic acid receptor 6(LPAR6) Homo sapiens The protein encoded by this gene belongs to the family of G-protein coupled receptors, that are preferentially activated by adenosine and uridine nucleotides. This gene aligns

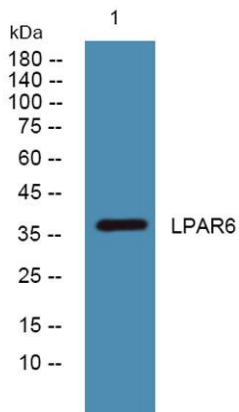




ELK Biotechnology

with an internal intron of the retinoblastoma susceptibility gene in the reverse orientation. Alternative splicing results in multiple transcript variants. [provided by RefSeq, Jun 2009],

Western blot analysis of lysates from U2OS cells, primary antibody was diluted at 1:1000, 4° over night



+86-27-59760950

ELKbio@ELKbiotech.com

www.elkbiotech.com

23-2, No.388 Gaoxin 2nd Road, Wuhan East Lake Hi-tech Development Zone, Hubei, P.R.C.