



# OR1E1 rabbit pAb

Cat No.:ES11538

For research use only

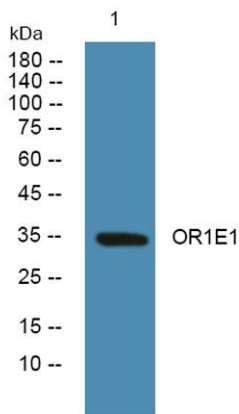
## Overview

<b>Product Name</b>	OR1E1 rabbit pAb
<b>Host species</b>	Rabbit
<b>Applications</b>	WB;ELISA
<b>Species Cross-Reactivity</b>	Human;Rat;Mouse;
<b>Recommended dilutions</b>	WB 1:500-2000 ELISA 1:5000-20000
<b>Immunogen</b>	Synthesized peptide derived from part region of human protein
<b>Specificity</b>	OR1E1 Polyclonal Antibody detects endogenous levels of protein.
<b>Formulation</b>	Liquid in PBS containing 50% glycerol, 0.5% BSA and 0.02% sodium azide.
<b>Storage</b>	Store at -20°C. Avoid repeated freeze-thaw cycles.
<b>Protein Name</b>	Olfactory receptor 1E1 (Olfactory receptor 13-66) (OR13-66) (Olfactory receptor 17-2/17-32) (OR17-2) (OR17-32) (Olfactory receptor 1E5) (Olfactory receptor 1E6) (Olfactory receptor 5-85) (OR5-85) (Olf
<b>Gene Name</b>	OR1E1 OR1E5 OR1E6 OR1E9P
<b>Cellular localization</b>	Cell membrane; Multi-pass membrane protein.
<b>Purification</b>	The antibody was affinity-purified from rabbit antiserum by affinity-chromatography using epitope-specific immunogen.
<b>Clonality</b>	Polyclonal
<b>Concentration</b>	1 mg/ml
<b>Observed band</b>	34kD
<b>Human Gene ID</b>	8387
<b>Human Swiss-Prot Number</b>	P30953
<b>Alternative Names</b>	
<b>Background</b>	olfactory receptor family 1 subfamily E member 1(OR1E1) Homo sapiens Olfactory receptors interact with odorant molecules in the nose, to initiate a neuronal response that triggers the perception of a smell. The olfactory receptor





proteins are members of a large family of G-protein-coupled receptors (GPCR) arising from single coding-exon genes. Olfactory receptors share a 7-transmembrane domain structure with many neurotransmitter and hormone receptors and are responsible for the recognition and G protein-mediated transduction of odorant signals. The olfactory receptor gene family is the largest in the genome. The nomenclature assigned to the olfactory receptor genes and proteins for this organism is independent of other organisms. [provided by RefSeq, Jul 2008],



Western blot analysis of lysates from K562 cells, primary antibody was diluted at 1:1000, 4° over night

