



OPSB rabbit pAb

Cat No.:ES11532

For research use only

Overview

Product Name	OPSB rabbit pAb
Host species	Rabbit
Applications	WB;ELISA
Species Cross-Reactivity	Human;Rat;Mouse;
Recommended dilutions	WB 1:500-2000 ELISA 1:5000-20000
Immunogen	Synthesized peptide derived from part region of human protein
Specificity	OPSB Polyclonal Antibody detects endogenous levels of protein.
Formulation	Liquid in PBS containing 50% glycerol, 0.5% BSA and 0.02% sodium azide.
Storage	Store at -20°C. Avoid repeated freeze-thaw cycles.
Protein Name	Short-wave-sensitive opsin 1 (Blue cone photoreceptor pigment) (Blue-sensitive opsin) (BOP)
Gene Name	OPN1SW BCP
Cellular localization	Cell membrane ; Multi-pass membrane protein . Photoreceptor inner segment . Cell projection, cilium, photoreceptor outer segment . Cytoplasm, perinuclear region .
Purification	The antibody was affinity-purified from rabbit antiserum by affinity-chromatography using epitope-specific immunogen.
Clonality	Polyclonal
Concentration	1 mg/ml
Observed band	38kD
Human Gene ID	611
Human Swiss-Prot Number	P03999
Alternative Names	
Background	This gene belongs to the G-protein coupled receptor 1 family, opsin subfamily. It encodes the blue cone pigment gene which is one of three types of cone photoreceptors responsible for normal color vision. Defects in this gene are the cause of tritan color

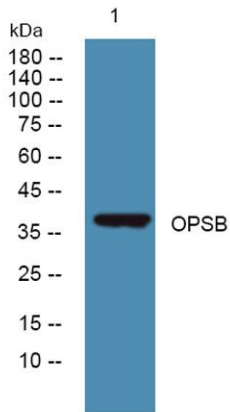




ELK Biotechnology

blindness (tritanopia). Affected individuals lack blue and yellow sensory mechanisms while retaining those for red and green. Defective blue vision is characteristic. [provided by RefSeq, Jul 2008],

Western blot analysis of lysates from K562 cells, primary antibody was diluted at 1:1000, 4° over night



+86-27-59760950

ELKbio@ELKbiotech.com

www.elkbiotech.com

23-2, No.388 Gaoxin 2nd Road, Wuhan East Lake Hi-tech Development Zone, Hubei, P.R.C