



MRGRD rabbit pAb

Cat No.:ES11508

For research use only

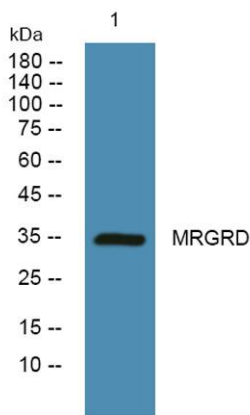
Overview

Product Name	MRGRD rabbit pAb
Host species	Rabbit
Applications	WB;ELISA
Species Cross-Reactivity	Human;Rat;Mouse;
Recommended dilutions	WB 1:500-2000 ELISA 1:5000-20000
Immunogen	Synthesized peptide derived from part region of human protein
Specificity	MRGRD Polyclonal Antibody detects endogenous levels of protein.
Formulation	Liquid in PBS containing 50% glycerol, 0.5% BSA and 0.02% sodium azide.
Storage	Store at -20°C. Avoid repeated freeze-thaw cycles.
Protein Name	Mas-related G-protein coupled receptor member D (Beta-alanine receptor) (G-protein coupled receptor TGR7)
Gene Name	MRGPRD MRGD
Cellular localization	Cell membrane ; Multi-pass membrane protein . Localized at the plasma membrane but internalized into the cytoplasm after treatment with beta-alanine.
Purification	The antibody was affinity-purified from rabbit antiserum by affinity-chromatography using epitope-specific immunogen.
Clonality	Polyclonal
Concentration	1 mg/ml
Observed band	35kD
Human Gene ID	116512
Human Swiss-Prot Number	Q8TDS7
Alternative Names	
Background	function:May regulate nociceptor function and/or development, including the sensation or modulation of pain. Functions as a specific membrane receptor for beta-alanine. Beta-alanine at micromolar doses





specifically evoked Ca^{2+} influx in cells expressing the receptor. Beta-alanine decreases forskolin-stimulated cAMP production in cells expressing the receptor, suggesting that the receptor couples with G-protein G(q) and G(i).,similarity:Belongs to the G-protein coupled receptor 1 family. Mas subfamily.,subcellular location:Localized at the plasma membrane but internalized into the cytoplasm after treatment with beta-alanine.,



Western blot analysis of lysates from SW480 cells, primary antibody was diluted at 1:1000, 4° over night

