



GPR26 rabbit pAb

Cat No.:ES11469

For research use only

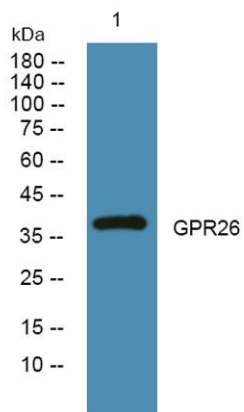
Overview

Product Name	GPR26 rabbit pAb
Host species	Rabbit
Applications	WB;ELISA
Species Cross-Reactivity	Human;Mouse;Rat
Recommended dilutions	WB 1:500-2000 ELISA 1:5000-20000
Immunogen	Synthesized peptide derived from human protein . at AA range: 100-180
Specificity	GPR26 Polyclonal Antibody detects endogenous levels of protein.
Formulation	Liquid in PBS containing 50% glycerol, 0.5% BSA and 0.02% sodium azide.
Storage	Store at -20°C. Avoid repeated freeze-thaw cycles.
Protein Name	G-protein coupled receptor 26
Gene Name	GPR26
Cellular localization	Cell membrane; Multi-pass membrane protein.
Purification	The antibody was affinity-purified from rabbit antiserum by affinity-chromatography using epitope-specific immunogen.
Clonality	Polyclonal
Concentration	1 mg/ml
Observed band	37kD
Human Gene ID	2849
Human Swiss-Prot Number	Q8NDV2
Alternative Names	
Background	This gene encodes a G protein-couple receptor protein. G-protein-coupled receptors are a large family of membrane proteins that are involved in cellular responses to environmental stimuli, neurotransmitters, and hormones. The encoded protein may play a role in neurodegenerative diseases. Epigenetic silencing of this gene has been observed in gliomas. [provided by RefSeq, Sep 2016],





ELK Biotechnology



Western blot analysis of lysates from A431 cells, primary antibody was diluted at 1:1000, 4° over night



+86-27-59760950

ELKbio@ELKbiotech.com

www.elkbiotech.com

23-2, No.388 Gaoxin 2nd Road, Wuhan East Lake Hi-tech Development Zone, Hubei, P.R.C