



DEF6 rabbit pAb

Cat No.:ES11449

For research use only

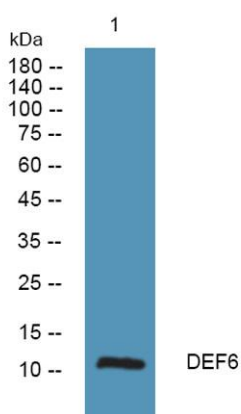
Overview

| | |
|---------------------------------|--|
| Product Name | DEF6 rabbit pAb |
| Host species | Rabbit |
| Applications | WB;ELISA |
| Species Cross-Reactivity | Human;Rat;Mouse; |
| Recommended dilutions | WB 1:500-2000 ELISA 1:5000-20000 |
| Immunogen | Synthesized peptide derived from human protein . at AA range: 51-100 |
| Specificity | DEF6 Polyclonal Antibody detects endogenous levels of protein. |
| Formulation | Liquid in PBS containing 50% glycerol, 0.5% BSA and 0.02% sodium azide. |
| Storage | Store at -20°C. Avoid repeated freeze-thaw cycles. |
| Protein Name | Defensin-6 (Defensin, alpha 6) |
| Gene Name | DEFA6 DEF6 |
| Cellular localization | Secreted . Cytoplasmic vesicle, secretory vesicle . Stored as propeptide in secretory granules of small intestinal Paneth cells and found in the ileum lumen as mature peptide. . |
| Purification | The antibody was affinity-purified from rabbit antiserum by affinity-chromatography using epitope-specific immunogen. |
| Clonality | Polyclonal |
| Concentration | 1 mg/ml |
| Observed band | 11kD |
| Human Gene ID | 1671 |
| Human Swiss-Prot Number | Q01524 |
| Alternative Names | |
| Background | defensin alpha 6(DEFA6) Homo sapiens Defensins are a family of antimicrobial and cytotoxic peptides thought to be involved in host defense. They are abundant in the granules of neutrophils and also found in the epithelia of mucosal surfaces such as those of the intestine, respiratory tract, |





urinary tract, and vagina. Members of the defensin family are highly similar in protein sequence and distinguished by a conserved cysteine motif. Several alpha defensin genes appear to be clustered on chromosome 8. The protein encoded by this gene, defensin, alpha 6, is highly expressed in the secretory granules of Paneth cells of the small intestine, and likely plays a role in host defense of human bowel. [provided by RefSeq, Oct 2014],



Western blot analysis of lysates from K562 cells, primary antibody was diluted at 1:1000, 4° over night

