



NIPA1 rabbit pAb

Cat No.:ES11442

For research use only

Overview

Product Name	NIPA1 rabbit pAb
Host species	Rabbit
Applications	WB;ELISA
Species Cross-Reactivity	Human;Mouse
Recommended dilutions	WB 1:500-2000 ELISA 1:5000-20000
Immunogen	Synthesized peptide derived from human protein . at AA range: 111-160
Specificity	NIPA1 Polyclonal Antibody detects endogenous levels of protein.
Formulation	Liquid in PBS containing 50% glycerol, 0.5% BSA and 0.02% sodium azide.
Storage	Store at -20°C. Avoid repeated freeze-thaw cycles.
Protein Name	Magnesium transporter NIPA1 (Non-imprinted in Prader-Willi/Angelman syndrome region protein 1) (Spastic paraplegia 6 protein)
Gene Name	NIPA1 SPG6
Cellular localization	Cell membrane ; Multi-pass membrane protein . Early endosome . Recruited to the cell membrane in response to low extracellular magnesium. .
Purification	The antibody was affinity-purified from rabbit antiserum by affinity-chromatography using epitope-specific immunogen.
Clonality	Polyclonal
Concentration	1 mg/ml
Observed band	36kD
Human Gene ID	123606
Human Swiss-Prot Number	Q7RTPO
Alternative Names	
Background	This gene encodes a magnesium transporter that associates with early endosomes and the cell surface in a variety of neuronal and epithelial cells. This protein may play a role in nervous system development and maintenance. Multiple transcript

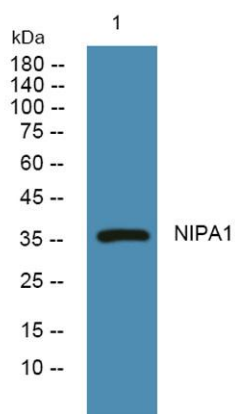




ELK Biotechnology

variants encoding different isoforms have been found for this gene. Mutations in this gene have been associated with autosomal dominant spastic paraplegia 6. [provided by RefSeq, Nov 2008],

Western blot analysis of lysates from PC12 cells, primary antibody was diluted at 1:1000, 4° over night



+86-27-59760950

ELKbio@ELKbiotech.com

www.elkbiotech.com

23-2, No.388 Gaoxin 2nd Road, Wuhan East Lake Hi-tech Development Zone, Hubei, P.R.C