



# PDYN rabbit pAb

Cat No.:ES11431

For research use only

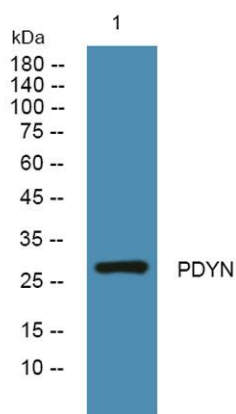
## Overview

<b>Product Name</b>	PDYN rabbit pAb
<b>Host species</b>	Rabbit
<b>Applications</b>	WB;ELISA
<b>Species Cross-Reactivity</b>	Human;Mouse;Rat
<b>Recommended dilutions</b>	WB 1:500-2000 ELISA 1:5000-20000
<b>Immunogen</b>	Synthesized peptide derived from human protein . at AA range: 201-250
<b>Specificity</b>	PDYN Polyclonal Antibody detects endogenous levels of protein.
<b>Formulation</b>	Liquid in PBS containing 50% glycerol, 0.5% BSA and 0.02% sodium azide.
<b>Storage</b>	Store at -20°C. Avoid repeated freeze-thaw cycles.
<b>Protein Name</b>	Proenkephalin-B (Beta-neoendorphin-dynorphin) (Preprodynorphin) [Cleaved into: Alpha-neoendorphin; Beta-neoendorphin; Big dynorphin (Big Dyn); Dynorphin A(1-17) (Dyn-A17) (Dynorphin A); Dynorphin A(1-
<b>Gene Name</b>	PDYN
<b>Cellular localization</b>	Secreted.
<b>Purification</b>	The antibody was affinity-purified from rabbit antiserum by affinity-chromatography using epitope-specific immunogen.
<b>Clonality</b>	Polyclonal
<b>Concentration</b>	1 mg/ml
<b>Observed band</b>	27kD
<b>Human Gene ID</b>	5173
<b>Human Swiss-Prot Number</b>	P01213
<b>Alternative Names</b>	
<b>Background</b>	The protein encoded by this gene is a preproprotein that is proteolytically processed to form the secreted opioid peptides beta-neoendorphin, dynorphin, leu-enkephalin, rimorphin, and leumorphin. These peptides are ligands for the





kappa-type of opioid receptor. Dynorphin is involved in modulating responses to several psychoactive substances, including cocaine. Multiple alternatively spliced transcript variants encoding the same protein have been found for this gene. [provided by RefSeq, Jul 2010],



Western blot analysis of lysates from SW480 cells, primary antibody was diluted at 1:1000, 4° over night

