



PGRP3 rabbit pAb

Cat No.:ES11418

For research use only

Overview

Product Name	PGRP3 rabbit pAb
Host species	Rabbit
Applications	WB;ELISA
Species Cross-Reactivity	Human;Mouse
Recommended dilutions	WB 1:500-2000 ELISA 1:5000-20000
Immunogen	Synthesized peptide derived from human protein . at AA range: 51-100
Specificity	PGRP3 Polyclonal Antibody detects endogenous levels of protein.
Formulation	Liquid in PBS containing 50% glycerol, 0.5% BSA and 0.02% sodium azide.
Storage	Store at -20°C. Avoid repeated freeze-thaw cycles.
Protein Name	Peptidoglycan recognition protein 3 (Peptidoglycan recognition protein I-alpha) (PGLYRPIalpha) (PGRP-I-alpha) (Peptidoglycan recognition protein intermediate alpha)
Gene Name	PGLYRP3 PGRPIA
Cellular localization	Secreted .
Purification	The antibody was affinity-purified from rabbit antiserum by affinity-chromatography using epitope-specific immunogen.
Clonality	Polyclonal
Concentration	1 mg/ml
Observed band	37kD
Human Gene ID	114771
Human Swiss-Prot Number	Q96LB9
Alternative Names	
Background	This gene encodes a peptidoglycan recognition protein, which belongs to the N-acetylmuramoyl-L-alanine amidase 2 family. These proteins are part of the innate immune system and recognize peptidoglycan, a ubiquitous component of bacterial cell walls. This antimicrobial

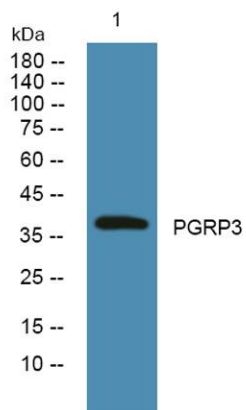




ELK Biotechnology

protein binds to murein peptidoglycans of Gram-positive bacteria. [provided by RefSeq, Oct 2014],

Western blot analysis of lysates from DU145 cells, primary antibody was diluted at 1:1000, 4° over night



+86-27-59760950

ELKbio@ELKbiotech.com

www.elkbiotech.com

23-2, No.388 Gaoxin 2nd Road, Wuhan East Lake Hi-tech Development Zone, Hubei, P.R.C