



TIA1 rabbit pAb

Cat No.:ES11391

For research use only

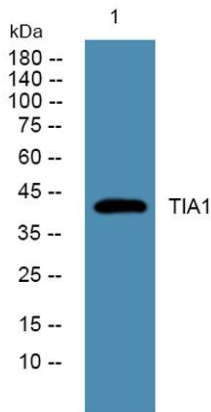
Overview

Product Name	TIA1 rabbit pAb
Host species	Rabbit
Applications	WB;ELISA
Species Cross-Reactivity	Human;Mouse
Recommended dilutions	WB 1:500-2000 ELISA 1:5000-20000
Immunogen	Synthesized peptide derived from human protein . at AA range: 201-250
Specificity	TIA1 Polyclonal Antibody detects endogenous levels of protein.
Formulation	Liquid in PBS containing 50% glycerol, 0.5% BSA and 0.02% sodium azide.
Storage	Store at -20°C. Avoid repeated freeze-thaw cycles.
Protein Name	Nucleolysin TIA-1 isoform p40 (RNA-binding protein TIA-1) (T-cell-restricted intracellular antigen-1) (TIA-1) (p40-TIA-1)
Gene Name	TIA1
Cellular localization	Nucleus . Cytoplasm . Cytoplasm, Stress granule . Accumulates in cytoplasmic stress granules (SG) following cellular damage (PubMed:15371533, PubMed:10613902). Recruitment to SG is induced by Zn(2+) (By similarity). .
Purification	The antibody was affinity-purified from rabbit antiserum by affinity-chromatography using epitope-specific immunogen.
Clonality	Polyclonal
Concentration	1 mg/ml
Observed band	42kD
Human Gene ID	7072
Human Swiss-Prot Number	P31483
Alternative Names	
Background	The product encoded by this gene is a member of a RNA-binding protein family and possesses nucleolytic activity against cytotoxic lymphocyte





(CTL) target cells. It has been suggested that this protein may be involved in the induction of apoptosis as it preferentially recognizes poly(A) homopolymers and induces DNA fragmentation in CTL targets. The major granule-associated species is a 15-kDa protein that is thought to be derived from the carboxyl terminus of the 40-kDa product by proteolytic processing. Alternative splicing resulting in different isoforms of this gene product has been described in the literature. [provided by RefSeq, Jul 2008],



Western blot analysis of lysates from Jarkat cells, primary antibody was diluted at 1:1000, 4° over night

