



YIPF3 rabbit pAb

Cat No.:ES11368

For research use only

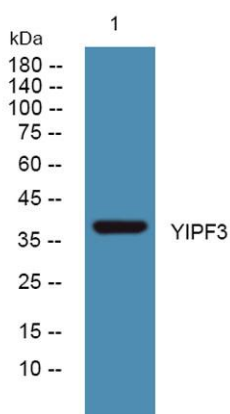
Overview

Product Name	YIPF3 rabbit pAb
Host species	Rabbit
Applications	WB;ELISA
Species Cross-Reactivity	Human;Mouse;Rat
Recommended dilutions	WB 1:500-2000 ELISA 1:5000-20000
Immunogen	Synthesized peptide derived from human protein . at AA range: N-terminal
Specificity	YIPF3 Polyclonal Antibody detects endogenous levels of protein.
Formulation	Liquid in PBS containing 50% glycerol, 0.5% BSA and 0.02% sodium azide.
Storage	Store at -20°C. Avoid repeated freeze-thaw cycles.
Protein Name	Protein YIPF3 (Killer lineage protein 1) (Natural killer cell-specific antigen KLIP1) (YIP1 family member 3) [Cleaved into: Protein YIPF3, 36 kDa form III]
Gene Name	YIPF3 C6orf109 KLIP1
Cellular localization	Cell membrane; Multi-pass membrane protein. Cytoplasm. Golgi apparatus, cis-Golgi network membrane ; Multi-pass membrane protein. Localization to the cytoplasm or to the cell membrane is developmentally and ontogenetically regulated.
Purification	The antibody was affinity-purified from rabbit antiserum by affinity-chromatography using epitope-specific immunogen.
Clonality	Polyclonal
Concentration	1 mg/ml
Observed band	38kD
Human Gene ID	25844
Human Swiss-Prot Number	Q9GZM5
Alternative Names	
Background	developmental stage:Expressed in fetal liver (at protein level). Expressed in embryonic





hematopoiesis sites.,function:May play a role in hematopoiesis.,PTM:Not glycosylated.,similarity:Belongs to the YIP1 family.,subcellular location:Localization to the cytoplasm or to the cell membrane is developmentally and ontogenetically regulated.,tissue specificity:Expressed by nucleated hematopoietic cells (at protein level),.



Western blot analysis of lysates from A431 cells, primary antibody was diluted at 1:1000, 4° over night

