



PKHA1 rabbit pAb

Cat No.:ES11355

For research use only

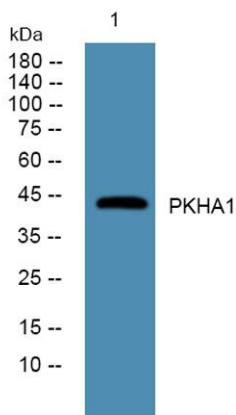
Overview

Product Name	PKHA1 rabbit pAb
Host species	Rabbit
Applications	WB;ELISA
Species Cross-Reactivity	Human;Mouse
Recommended dilutions	WB 1:500-2000 ELISA 1:5000-20000
Immunogen	Synthesized peptide derived from human protein . at AA range: 170-250
Specificity	PKHA1 Polyclonal Antibody detects endogenous levels of protein.
Formulation	Liquid in PBS containing 50% glycerol, 0.5% BSA and 0.02% sodium azide.
Storage	Store at -20°C. Avoid repeated freeze-thaw cycles.
Protein Name	Pleckstrin homology domain-containing family A member 1 (PH domain-containing family A member 1) (Tandem PH domain-containing protein 1) (TAPP-1)
Gene Name	PLEKHA1 TAPP1
Cellular localization	Cytoplasm . Cell membrane ; Peripheral membrane protein. Nucleus . Locates to the plasma membrane after treatments that stimulate the production of PtdIns3,4P2. .
Purification	The antibody was affinity-purified from rabbit antiserum by affinity-chromatography using epitope-specific immunogen.
Clonality	Polyclonal
Concentration	1 mg/ml
Observed band	44kD
Human Gene ID	59338
Human Swiss-Prot Number	Q9HB21
Alternative Names	
Background	This gene encodes a pleckstrin homology domain-containing adapter protein. The encoded protein is localized to the plasma membrane where





it specifically binds phosphatidylinositol 3,4-bisphosphate. This protein may be involved in the formation of signaling complexes in the plasma membrane. Polymorphisms in this gene are associated with age-related macular degeneration. Alternate splicing results in multiple transcript variants. A pseudogene of this gene is found on chromosome 5.[provided by RefSeq, Sep 2010],



Western blot analysis of lysates from SW480 cells, primary antibody was diluted at 1:1000, 4° over night

