



# ERR1 rabbit pAb

Cat No.:ES11349

For research use only

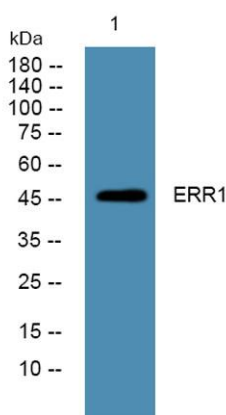
## Overview

<b>Product Name</b>	ERR1 rabbit pAb
<b>Host species</b>	Rabbit
<b>Applications</b>	WB;ELISA
<b>Species Cross-Reactivity</b>	Human;Rat;Mouse
<b>Recommended dilutions</b>	WB 1:500-2000 ELISA 1:5000-20000
<b>Immunogen</b>	Synthesized peptide derived from human protein . at AA range: 160-240
<b>Specificity</b>	ERR1 Polyclonal Antibody detects endogenous levels of protein.
<b>Formulation</b>	Liquid in PBS containing 50% glycerol, 0.5% BSA and 0.02% sodium azide.
<b>Storage</b>	Store at -20°C. Avoid repeated freeze-thaw cycles.
<b>Protein Name</b>	Steroid hormone receptor ERR1 (Estrogen receptor-like 1) (Estrogen-related receptor alpha) (ERR-alpha) (Nuclear receptor subfamily 3 group B member 1)
<b>Gene Name</b>	ESRRA ERR1 ESRL1 NR3B1
<b>Cellular localization</b>	Nucleus . Cytoplasm . Co-localizes to the cytoplasm only in presence of MAPK15. .
<b>Purification</b>	The antibody was affinity-purified from rabbit antiserum by affinity-chromatography using epitope-specific immunogen.
<b>Clonality</b>	Polyclonal
<b>Concentration</b>	1 mg/ml
<b>Observed band</b>	46kD
<b>Human Gene ID</b>	2101
<b>Human Swiss-Prot Number</b>	P11474
<b>Alternative Names</b>	
<b>Background</b>	The protein encoded by this gene is a nuclear receptor that is closely related to the estrogen receptor. This protein acts as a site-specific transcription regulator and has been also shown to interact with estrogen and the transcripion factor





TFIIB by direct protein-protein contact. The binding and regulatory activities of this protein have been demonstrated in the regulation of a variety of genes including lactoferrin, osteopontin, medium-chain acyl coenzyme A dehydrogenase (MCAD) and thyroid hormone receptor genes. A processed pseudogene of ESRRA is located on chromosome 13q12.1. Alternatively spliced transcript variants have been found for this gene. [provided by RefSeq, Sep 2013],



Western blot analysis of lysates from DU145 cells, primary antibody was diluted at 1:1000, 4° over night

