



FABP6 rabbit pAb

Cat No.:ES11334

For research use only

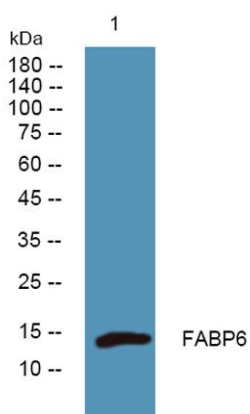
Overview

Product Name	FABP6 rabbit pAb
Host species	Rabbit
Applications	WB;ELISA
Species Cross-Reactivity	Human;Rat;Mouse
Recommended dilutions	WB 1:500-2000 ELISA 1:5000-20000
Immunogen	Synthesized peptide derived from human protein . at AA range: 30-110
Specificity	FABP6 Polyclonal Antibody detects endogenous levels of protein.
Formulation	Liquid in PBS containing 50% glycerol, 0.5% BSA and 0.02% sodium azide.
Storage	Store at -20°C. Avoid repeated freeze-thaw cycles.
Protein Name	Gastrotrypin (GT) (Fatty acid-binding protein 6) (Ileal lipid-binding protein) (ILBP) (Intestinal 15 kDa protein) (I-15P) (Intestinal bile acid-binding protein) (I-BABP)
Gene Name	FABP6 ILBP ILLBP
Cellular localization	[Isoform 1]: Cytoplasm . Membrane; Peripheral membrane protein ; Cytoplasmic side .; [Isoform 2]: Cytoplasm . Localized close to nucleus on the apical side of both normal and neoplastic cells. .
Purification	The antibody was affinity-purified from rabbit antiserum by affinity-chromatography using epitope-specific immunogen.
Clonality	Polyclonal
Concentration	1 mg/ml
Observed band	14kD
Human Gene ID	2172
Human Swiss-Prot Number	P51161
Alternative Names	
Background	This gene encodes the ileal fatty acid binding protein. Fatty acid binding proteins are a family of small, highly conserved, cytoplasmic proteins that





bind long-chain fatty acids and other hydrophobic ligands. FABP6 and FABP1 (the liver fatty acid binding protein) are also able to bind bile acids. It is thought that FABPs roles include fatty acid uptake, transport, and metabolism. Transcript variants generated by alternate transcription promoters and/or alternate splicing have been found for this gene. [provided by RefSeq, Jul 2008],



Western blot analysis of lysates from K562 cells, primary antibody was diluted at 1:1000, 4° over night

