



ELAF rabbit pAb

Cat No.:ES11322

For research use only

Overview

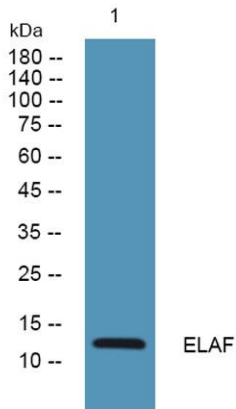
| | |
|---------------------------------|---|
| Product Name | ELAF rabbit pAb |
| Host species | Rabbit |
| Applications | WB;ELISA |
| Species Cross-Reactivity | Human;Rat;Mouse; |
| Recommended dilutions | WB 1:500-2000 ELISA 1:5000-20000 |
| Immunogen | Synthesized peptide derived from human protein . at AA range: 40-120 |
| Specificity | ELAF Polyclonal Antibody detects endogenous levels of protein. |
| Formulation | Liquid in PBS containing 50% glycerol, 0.5% BSA and 0.02% sodium azide. |
| Storage | Store at -20°C. Avoid repeated freeze-thaw cycles. |
| Protein Name | Elafin (Elastase-specific inhibitor) (ESI) (Peptidase inhibitor 3) (PI-3) (Protease inhibitor WAP3) (Skin-derived antileukoproteinase) (SKALP) (WAP four-disulfide core domain protein 14) |
| Gene Name | PI3 WAP3 WFDC14 |
| Cellular localization | Secreted. |
| Purification | The antibody was affinity-purified from rabbit antiserum by affinity-chromatography using epitope-specific immunogen. |
| Clonality | Polyclonal |
| Concentration | 1 mg/ml |
| Observed band | 12kD |
| Human Gene ID | 5266 |
| Human Swiss-Prot Number | P19957 |
| Alternative Names | |
| Background | This gene encodes an elastase-specific inhibitor that functions as an antimicrobial peptide against Gram-positive and Gram-negative bacteria, and fungal pathogens. The protein contains a WAP-type four-disulfide core (WFDC) domain, and is thus a member of the WFDC domain family. Most WFDC |





ELK Biotechnology

gene members are localized to chromosome 20q12-q13 in two clusters: centromeric and telomeric. This gene belongs to the centromeric cluster. Expression of this gene is upregulated by bacterial lipopolysaccharides and cytokines. [provided by RefSeq, Oct 2014],



Western blot analysis of lysates from PC12 cells, primary antibody was diluted at 1:1000, 4° over night



+86-27-59760950

ELKbio@ELKbiotech.com

www.elkbiotech.com

23-2, No.388 Gaoxin 2nd Road, Wuhan East Lake Hi-tech Development Zone, Hubei, P.R.C.