



FCN3 rabbit pAb

Cat No.:ES11312

For research use only

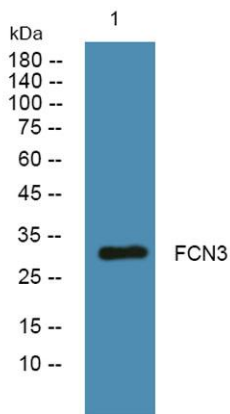
Overview

Product Name	FCN3 rabbit pAb
Host species	Rabbit
Applications	WB;ELISA
Species Cross-Reactivity	Human;Rat;Mouse;
Recommended dilutions	WB 1:500-2000 ELISA 1:5000-20000
Immunogen	Synthesized peptide derived from human protein . at AA range: 130-210
Specificity	FCN3 Polyclonal Antibody detects endogenous levels of protein.
Formulation	Liquid in PBS containing 50% glycerol, 0.5% BSA and 0.02% sodium azide.
Storage	Store at -20°C. Avoid repeated freeze-thaw cycles.
Protein Name	Ficolin-3 (Collagen/fibrinogen domain-containing lectin 3 p35) (Collagen/fibrinogen domain-containing protein 3) (Hakata antigen)
Gene Name	FCN3 FCNH HAKA1
Cellular localization	Secreted. Found in blood plasma, bronchus, alveolus and bile duct.
Purification	The antibody was affinity-purified from rabbit antiserum by affinity-chromatography using epitope-specific immunogen.
Clonality	Polyclonal
Concentration	1 mg/ml
Observed band	32kD
Human Gene ID	8547
Human Swiss-Prot Number	O75636
Alternative Names	
Background	ficolin 3(FCN3) Homo sapiens Ficolins are a group of proteins which consist of a collagen-like domain and a fibrinogen-like domain. In human serum, there are two types of ficolins, both of which have lectin activity. The protein encoded by this gene is a thermolabile beta-2-macroglycoprotein





found in all human serum and is a member of the ficolin/opsin p35 lectin family. The protein, which was initially identified based on its reactivity with sera from patients with systemic lupus erythematosus, has been shown to have a calcium-independent lectin activity. The protein can activate the complement pathway in association with MASPs and sMAP, thereby aiding in host defense through the activation of the lectin pathway. Alternative splicing occurs at this locus and two variants, each encoding a distinct isoform, have been identified. [provided by RefSeq, Jul 2008],



Western blot analysis of lysates from A431 cells, primary antibody was diluted at 1:1000, 4° over night

