



EGFL7 rabbit pAb

Cat No.:ES11305

For research use only

Overview

Product Name	EGFL7 rabbit pAb
Host species	Rabbit
Applications	WB;ELISA
Species Cross-Reactivity	Human;Rat;Mouse
Recommended dilutions	WB 1:500-2000 ELISA 1:5000-20000
Immunogen	Synthesized peptide derived from human protein . at AA range: 140-220
Specificity	EGFL7 Polyclonal Antibody detects endogenous levels of protein.
Formulation	Liquid in PBS containing 50% glycerol, 0.5% BSA and 0.02% sodium azide.
Storage	Store at -20°C. Avoid repeated freeze-thaw cycles.
Protein Name	Epidermal growth factor-like protein 7 (EGF-like protein 7) (Multiple epidermal growth factor-like domains protein 7) (Multiple EGF-like domains protein 7) (NOTCH4-like protein) (Vascular endothelial
Gene Name	EGFL7 MEGF7 UNQ187/PRO1449
Cellular localization	Secreted, extracellular space .
Purification	The antibody was affinity-purified from rabbit antiserum by affinity-chromatography using epitope-specific immunogen.
Clonality	Polyclonal
Concentration	1 mg/ml
Observed band	30kD
Human Gene ID	51162
Human Swiss-Prot Number	Q9UHF1
Alternative Names	
Background	This gene encodes a secreted endothelial cell protein that contains two epidermal growth factor-like domains. The encoded protein may play a role in regulating vasculogenesis. This protein may be involved in the growth and proliferation of tumor

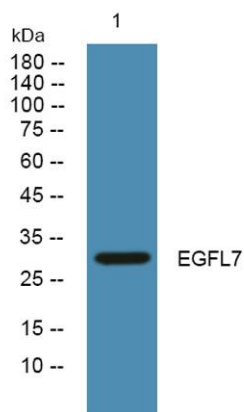




ELK Biotechnology

cells. Alternate splicing results in multiple transcript variants. [provided by RefSeq, Feb 2012],

Western blot analysis of lysates from A431 cells, primary antibody was diluted at 1:1000, 4° over night



+86-27-59760950

ELKbio@ELKbiotech.com

www.elkbiotech.com

23-2, No.388 Gaoxin 2nd Road, Wuhan East Lake Hi-tech Development Zone, Hubei, P.R.C