



# S10A8 rabbit pAb

Cat No.:ES11298

For research use only

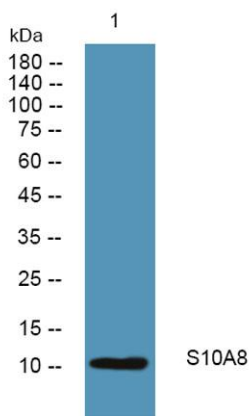
## Overview

<b>Product Name</b>	S10A8 rabbit pAb
<b>Host species</b>	Rabbit
<b>Applications</b>	WB;ELISA
<b>Species Cross-Reactivity</b>	Human;Rat;Mouse
<b>Recommended dilutions</b>	WB 1:500-2000 ELISA 1:5000-20000
<b>Immunogen</b>	Synthesized peptide derived from human protein . at AA range: 30-110
<b>Specificity</b>	S10A8 Polyclonal Antibody detects endogenous levels of protein.
<b>Formulation</b>	Liquid in PBS containing 50% glycerol, 0.5% BSA and 0.02% sodium azide.
<b>Storage</b>	Store at -20°C. Avoid repeated freeze-thaw cycles.
<b>Protein Name</b>	Protein S100-A8 (Calgranulin-A) (Calprotectin L1L subunit) (Cystic fibrosis antigen) (CFAG) (Leukocyte L1 complex light chain) (Migration inhibitory factor-related protein 8) (MRP-8) (p8) (S100 calciu S100A8 CAGA CFAG MRP8
<b>Gene Name</b>	S100A8 CAGA CFAG MRP8
<b>Cellular localization</b>	Secreted. Cytoplasm. Cytoplasm, cytoskeleton. Cell membrane; Peripheral membrane protein. Predominantly localized in the cytoplasm. Upon elevation of the intracellular calcium level, translocated from the cytoplasm to the cytoskeleton and the cell membran
<b>Purification</b>	The antibody was affinity-purified from rabbit antiserum by affinity-chromatography using epitope-specific immunogen.
<b>Clonality</b>	Polyclonal
<b>Concentration</b>	1 mg/ml
<b>Observed band</b>	10kD
<b>Human Gene ID</b>	6279
<b>Human Swiss-Prot Number</b>	P05109
<b>Alternative Names</b>	
<b>Background</b>	S100 calcium binding protein A8(S100A8) Homo





sapiens The protein encoded by this gene is a member of the S100 family of proteins containing 2 EF-hand calcium-binding motifs. S100 proteins are localized in the cytoplasm and/or nucleus of a wide range of cells, and involved in the regulation of a number of cellular processes such as cell cycle progression and differentiation. S100 genes include at least 13 members which are located as a cluster on chromosome 1q21. This protein may function in the inhibition of casein kinase and as a cytokine. Altered expression of this protein is associated with the disease cystic fibrosis. Multiple transcript variants encoding different isoforms have been found for this gene. [provided by RefSeq, Jan 2016],



Western blot analysis of lysates from SW480 cells, primary antibody was diluted at 1:1000, 4° over night

