



NANO2 rabbit pAb

Cat No.:ES11270

For research use only

Overview

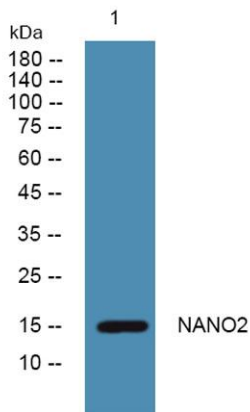
Product Name	NANO2 rabbit pAb
Host species	Rabbit
Applications	WB;ELISA
Species Cross-Reactivity	Human;Mouse
Recommended dilutions	WB 1:500-2000 ELISA 1:5000-20000
Immunogen	Synthesized peptide derived from human protein . at AA range: 10-90
Specificity	NANO2 Polyclonal Antibody detects endogenous levels of protein.
Formulation	Liquid in PBS containing 50% glycerol, 0.5% BSA and 0.02% sodium azide.
Storage	Store at -20°C. Avoid repeated freeze-thaw cycles.
Protein Name	Nanos homolog 2 (NOS-2)
Gene Name	NANOS2 NOS2
Cellular localization	Cytoplasm . Cytoplasm, P-body . Cytoplasm, perinuclear region . Localizes at P-bodies during gonocyte development (By similarity). More abundant in perinuclear region of the cytoplasm of the germ cells of the adult testis. .
Purification	The antibody was affinity-purified from rabbit antiserum by affinity-chromatography using epitope-specific immunogen.
Clonality	Polyclonal
Concentration	1 mg/ml
Observed band	15kD
Human Gene ID	339345
Human Swiss-Prot Number	P60321
Alternative Names	
Background	domain:The Nanos-type zinc finger is composed of two C2HC motifs, each motif binding one molecule of zinc. It is essential for the translation repression activity of the protein.,function:Required to support proliferation and self-renewal of proximal germ cells





ELK Biotechnology

in males only. Probably regulates translation of specific mRNAs by associating with the 3'-UTR of mRNA targets. Essential for spermatogonia formation.,similarity:Belongs to the nanos family.,similarity:Contains 1 nanos-type zinc finger.,



Western blot analysis of lysates from Jarkat cells, primary antibody was diluted at 1:1000, 4°over night



+86-27-59760950

ELKbio@ELKbiotech.com

www.elkbiotech.com

23-2, No.388 Gaoxin 2nd Road,Wuhan East Lake Hi-tech Development Zone, Hubei , P.R.C