



RBTN2 rabbit pAb

Cat No.:ES11227

For research use only

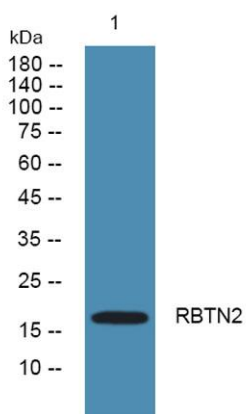
Overview

| | |
|---------------------------------|--|
| Product Name | RBTN2 rabbit pAb |
| Host species | Rabbit |
| Applications | WB;ELISA |
| Species Cross-Reactivity | Human;Mouse |
| Recommended dilutions | WB 1:500-2000 ELISA 1:5000-20000 |
| Immunogen | Synthesized peptide derived from human protein . at AA range: 1-80 |
| Specificity | RBTN2 Polyclonal Antibody detects endogenous levels of protein. |
| Formulation | Liquid in PBS containing 50% glycerol, 0.5% BSA and 0.02% sodium azide. |
| Storage | Store at -20°C. Avoid repeated freeze-thaw cycles. |
| Protein Name | Rhombotin-2 (Cysteine-rich protein TTG-2) (LIM domain only protein 2) (LMO-2) (T-cell translocation protein 2) |
| Gene Name | LMO2 RBTN2 RBTNL1 RHOM2 TTG2 |
| Cellular localization | Nucleus . |
| Purification | The antibody was affinity-purified from rabbit antiserum by affinity-chromatography using epitope-specific immunogen. |
| Clonality | Polyclonal |
| Concentration | 1 mg/ml |
| Observed band | 17kD |
| Human Gene ID | 4005 |
| Human Swiss-Prot Number | P25791 |
| Alternative Names | |
| Background | LIM domain only 2(LMO2) Homo sapiens LMO2 encodes a cysteine-rich, two LIM-domain protein that is required for yolk sac erythropoiesis. The LMO2 protein has a central and crucial role in hematopoietic development and is highly conserved. The LMO2 transcription start site is located approximately 25 kb downstream from the |





11p13 T-cell translocation cluster (11p13 ttc), where a number T-cell acute lymphoblastic leukemia-specific translocations occur. Alternative splicing results in multiple transcript variants encoding different isoforms.[provided by RefSeq, Nov 2008],



Western blot analysis of lysates from Jarkat cells, primary antibody was diluted at 1:1000, 4° over night

