



# RET1 rabbit pAb

Cat No.:ES11208

For research use only

## Overview

<b>Product Name</b>	RET1 rabbit pAb
<b>Host species</b>	Rabbit
<b>Applications</b>	WB;ELISA
<b>Species Cross-Reactivity</b>	Human;Rat;Mouse
<b>Recommended dilutions</b>	WB 1:500-2000 ELISA 1:5000-20000
<b>Immunogen</b>	Synthesized peptide derived from human protein . at AA range: 10-90
<b>Specificity</b>	RET1 Polyclonal Antibody detects endogenous levels of protein.
<b>Formulation</b>	Liquid in PBS containing 50% glycerol, 0.5% BSA and 0.02% sodium azide.
<b>Storage</b>	Store at -20°C. Avoid repeated freeze-thaw cycles.
<b>Protein Name</b>	Retinol-binding protein 1 (Cellular retinol-binding protein) (CRBP) (Cellular retinol-binding protein I) (CRBP-I)
<b>Gene Name</b>	RBP1 CRBP1
<b>Cellular localization</b>	Cytoplasm . Lipid droplet .
<b>Purification</b>	The antibody was affinity-purified from rabbit antiserum by affinity-chromatography using epitope-specific immunogen.
<b>Clonality</b>	Polyclonal
<b>Concentration</b>	1 mg/ml
<b>Observed band</b>	14kD
<b>Human Gene ID</b>	5947
<b>Human Swiss-Prot Number</b>	P09455
<b>Alternative Names</b>	
<b>Background</b>	retinol binding protein 1(RBP1) Homo sapiens This gene encodes the carrier protein involved in the transport of retinol (vitamin A alcohol) from the liver storage site to peripheral tissue. Vitamin A is a fat-soluble vitamin necessary for growth, reproduction, differentiation of epithelial tissues, and vision. Multiple transcript variants encoding

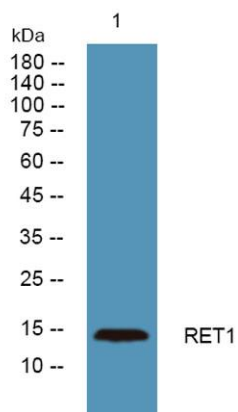




**ELK Biotechnology**

different isoforms have been found for this gene.  
[provided by RefSeq, Aug 2008],

Western blot analysis of lysates from PC12 cells, primary  
antibody was diluted at 1:1000, 4° over night



+86-27-59760950

[ELKbio@ELKbiotech.com](mailto:ELKbio@ELKbiotech.com)

[www.elkbiotech.com](http://www.elkbiotech.com)

23-2, No.388 Gaoxin 2nd Road, Wuhan East Lake Hi-tech Development Zone, Hubei, P.R.C