



CRDL2 rabbit pAb

Cat No.:ES11194

For research use only

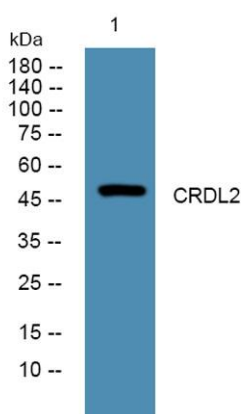
Overview

Product Name	CRDL2 rabbit pAb
Host species	Rabbit
Applications	WB;ELISA
Species Cross-Reactivity	Human;Mouse
Recommended dilutions	WB 1:500-2000 ELISA 1:5000-20000
Immunogen	Synthesized peptide derived from human protein . at AA range: 330-410
Specificity	CRDL2 Polyclonal Antibody detects endogenous levels of protein.
Formulation	Liquid in PBS containing 50% glycerol, 0.5% BSA and 0.02% sodium azide.
Storage	Store at -20°C. Avoid repeated freeze-thaw cycles.
Protein Name	Chordin-like protein 2 (Breast tumor novel factor 1) (BNF-1) (Chordin-related protein 2)
Gene Name	CHRD2 BNF1 CHL2 UNQ765/PRO1557
Cellular localization	[Isoform 1]: Secreted .; [Isoform 2]: Secreted .; [Isoform 3]: Cytoplasm .; [Isoform 4]: Cytoplasm .; [Isoform 5]: Cytoplasm .
Purification	The antibody was affinity-purified from rabbit antiserum by affinity-chromatography using epitope-specific immunogen.
Clonality	Polyclonal
Concentration	1 mg/ml
Observed band	47kD
Human Gene ID	25884
Human Swiss-Prot Number	Q6WN34
Alternative Names	
Background	This gene encodes a member of the chordin family of proteins. Chordin family members are secreted proteins that share a cysteine-rich pro-collagen repeat domain and associate with members of the transforming growth factor beta superfamily. In vitro assays demonstrate a direct interaction between the





encoded protein and human activin A. This gene is expressed in many tissues including osteoblasts, where it is differentially expressed during differentiation. In addition, its expression is upregulated in human osteoarthritic joint cartilage, suggesting a role in adult cartilage regeneration. [provided by RefSeq, Jan 2015],



Western blot analysis of lysates from DU145 cells, primary antibody was diluted at 1:1000, 4° over night

