



# CRIS3 rabbit pAb

Cat No.:ES11188

For research use only

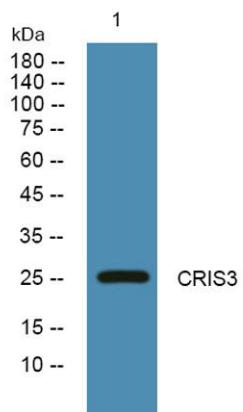
## Overview

<b>Product Name</b>	CRIS3 rabbit pAb
<b>Host species</b>	Rabbit
<b>Applications</b>	WB;ELISA
<b>Species Cross-Reactivity</b>	Human;Mouse
<b>Recommended dilutions</b>	WB 1:500-2000 ELISA 1:5000-20000
<b>Immunogen</b>	Synthesized peptide derived from human protein . at AA range: 30-110
<b>Specificity</b>	CRIS3 Polyclonal Antibody detects endogenous levels of protein.
<b>Formulation</b>	Liquid in PBS containing 50% glycerol, 0.5% BSA and 0.02% sodium azide.
<b>Storage</b>	Store at -20°C. Avoid repeated freeze-thaw cycles.
<b>Protein Name</b>	Cysteine-rich secretory protein 3 (CRISP-3) (Specific granule protein of 28 kDa) (SGP28)
<b>Gene Name</b>	CRISP3
<b>Cellular localization</b>	Secreted. In neutrophils, localized in specific granules.
<b>Purification</b>	The antibody was affinity-purified from rabbit antiserum by affinity-chromatography using epitope-specific immunogen.
<b>Clonality</b>	Polyclonal
<b>Concentration</b>	1 mg/ml
<b>Observed band</b>	26kD
<b>Human Gene ID</b>	10321
<b>Human Swiss-Prot Number</b>	P54108
<b>Alternative Names</b>	
<b>Background</b>	similarity:Belongs to the CRISP family.,subcellular location:In neutrophils, localized in specific granules.,tissue specificity:Salivary gland, pancreas and prostate > epididymis, ovary, thymus and colon.,





**ELK Biotechnology**



Western blot analysis of lysates from Jarkat cells, primary antibody was diluted at 1:1000, 4° over night



+86-27-59760950

ELKbio@ELKbiotech.com

www.elkbiotech.com

23-2, No.388 Gaoxin 2nd Road, Wuhan East Lake Hi-tech Development Zone, Hubei, P.R.C