



# TEFF1 rabbit pAb

Cat No.:ES11108

For research use only

## Overview

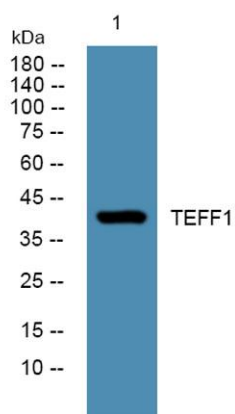
<b>Product Name</b>	TEFF1 rabbit pAb
<b>Host species</b>	Rabbit
<b>Applications</b>	WB;ELISA
<b>Species Cross-Reactivity</b>	Human;Rat;Mouse
<b>Recommended dilutions</b>	WB 1:500-2000 ELISA 1:5000-20000
<b>Immunogen</b>	Synthesized peptide derived from part region of human protein
<b>Specificity</b>	TEFF1 Polyclonal Antibody detects endogenous levels of protein.
<b>Formulation</b>	Liquid in PBS containing 50% glycerol, 0.5% BSA and 0.02% sodium azide.
<b>Storage</b>	Store at -20°C. Avoid repeated freeze-thaw cycles.
<b>Protein Name</b>	Tomoregulin-1 (TR-1) (H7365) (Transmembrane protein with EGF-like and one follistatin-like domain)
<b>Gene Name</b>	TMEFF1 C9orf2
<b>Cellular localization</b>	Cell membrane ; Single-pass type I membrane protein .
<b>Purification</b>	The antibody was affinity-purified from rabbit antiserum by affinity-chromatography using epitope-specific immunogen.
<b>Clonality</b>	Polyclonal
<b>Concentration</b>	1 mg/ml
<b>Observed band</b>	41kD
<b>Human Gene ID</b>	100526694
<b>Human Swiss-Prot Number</b>	Q8IYR6
<b>Alternative Names</b>	
<b>Background</b>	function:May inhibit NODAL and BMP signaling during neural patterning (By similarity). May be a tumor suppressor in brain cancers.,similarity:Belongs to the tomoregulin family.,similarity:Belongs to the UPF0439 family.,similarity:Contains 1 EGF-like domain.,similarity:Contains 2 Kazal-like





**ELK Biotechnology**

domains.,subunit:May interact with ST14.,tissue specificity:Expressed in brain.,tissue specificity:Expressed predominantly in brain, and at lower levels in heart, placenta and skeletal muscle. Down-regulated in brain tumors as compared to control brain tissues.,



Western blot analysis of lysates from U2OS cells, primary antibody was diluted at 1:1000, 4° over night



+86-27-59760950

[ELKbio@ELKbiotech.com](mailto:ELKbio@ELKbiotech.com)

[www.elkbiotech.com](http://www.elkbiotech.com)

23-2, No.388 Gaoxin 2nd Road,Wuhan East Lake Hi-tech Development Zone, Hubei , P.R.C