



# GBLP rabbit pAb

Cat No.:ES11069

For research use only

## Overview

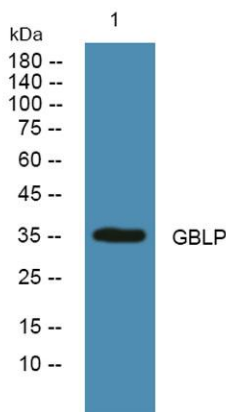
<b>Product Name</b>	GBLP rabbit pAb
<b>Host species</b>	Rabbit
<b>Applications</b>	WB;ELISA
<b>Species Cross-Reactivity</b>	Human;Rat;Mouse
<b>Recommended dilutions</b>	WB 1:500-2000 ELISA 1:5000-20000
<b>Immunogen</b>	Synthesized peptide derived from part region of human protein
<b>Specificity</b>	GBLP Polyclonal Antibody detects endogenous levels of protein.
<b>Formulation</b>	Liquid in PBS containing 50% glycerol, 0.5% BSA and 0.02% sodium azide.
<b>Storage</b>	Store at -20°C. Avoid repeated freeze-thaw cycles.
<b>Protein Name</b>	Guanine nucleotide-binding protein subunit beta-2-like 1 (Cell proliferation-inducing gene 21 protein) (Guanine nucleotide-binding protein subunit beta-like protein 12.3) (Human lung cancer oncogene 7
<b>Gene Name</b>	GNB2L1 HLC7 PIG21
<b>Cellular localization</b>	Cell membrane ; Peripheral membrane protein. Cytoplasm . Cytoplasm, perinuclear region . Nucleus . Perikaryon . Cell projection, dendrite . Cell projection, phagocytic cup . Recruited to the plasma membrane through interaction with KRT1 which binds to mem
<b>Purification</b>	The antibody was affinity-purified from rabbit antiserum by affinity-chromatography using epitope-specific immunogen.
<b>Clonality</b>	Polyclonal
<b>Concentration</b>	1 mg/ml
<b>Observed band</b>	34kD
<b>Human Gene ID</b>	10399
<b>Human Swiss-Prot Number</b>	P63244
<b>Alternative Names</b>	





## Background

domain: The WD repeats domain 5 mediates interaction with TRIM63., function: Seems to bind protein kinase C acting as an intracellular receptor to anchor the activated PKC to the cytoskeleton. May be involved in up-regulation of the activity of kinases such as PKC via binding to KRT1. Together with KRT1 and ITGB1, serves as a platform for SRC activation or inactivation. May play an important role in the developing brain and neuronal differentiation., similarity: Belongs to the WD repeat G protein beta family., similarity: Contains 7 WD repeats., subcellular location: Located on plasma membrane of neuroblastoma NMB7 cells., subunit: Binds SLC9A3R1. Forms a ternary complex with TRIM63 and PRKCE. Interacts with HABP4 and KRT1.,



Western blot analysis of lysates from SW480 cells, primary antibody was diluted at 1:1000, 4° over night

