



RSPO2 rabbit pAb

Cat No.:ES11063

For research use only

Overview

Product Name	RSPO2 rabbit pAb
Host species	Rabbit
Applications	WB;ELISA
Species Cross-Reactivity	Human;Mouse
Recommended dilutions	WB 1:500-2000 ELISA 1:5000-20000
Immunogen	Synthesized peptide derived from part region of human protein
Specificity	RSPO2 Polyclonal Antibody detects endogenous levels of protein.
Formulation	Liquid in PBS containing 50% glycerol, 0.5% BSA and 0.02% sodium azide.
Storage	Store at -20°C. Avoid repeated freeze-thaw cycles.
Protein Name	R-spondin-2 (Roof plate-specific spondin-2) (hRspo2)
Gene Name	RSPO2 UNQ9384/PRO34209
Cellular localization	Secreted .
Purification	The antibody was affinity-purified from rabbit antiserum by affinity-chromatography using epitope-specific immunogen.
Clonality	Polyclonal
Concentration	1 mg/ml
Observed band	26kD
Human Gene ID	340419
Human Swiss-Prot Number	Q6UXX9
Alternative Names	
Background	This gene encodes a member of the R-spondin family of proteins. These proteins are secreted ligands of leucine-rich repeat containing G protein-coupled receptors that enhance Wnt signaling through the inhibition of ubiquitin E3 ligases. A chromosomal translocation including this locus that results in the formation of a gene fusion has been identified in multiple human cancers.

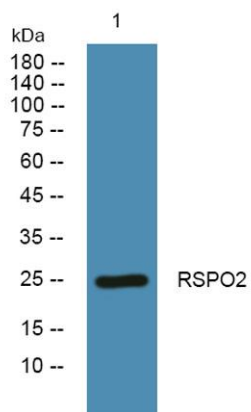




ELK Biotechnology

Alternative splicing results in multiple transcript variants. [provided by RefSeq, Dec 2015],

Western blot analysis of lysates from HCT116 cells, primary antibody was diluted at 1:1000, 4° over night



+86-27-59760950

ELKbio@ELKbiotech.com

www.elkbiotech.com

23-2, No.388 Gaoxin 2nd Road, Wuhan East Lake Hi-tech Development Zone, Hubei, P.R.C