



# FHR1 rabbit pAb

Cat No.:ES11060

For research use only

## Overview

<b>Product Name</b>	FHR1 rabbit pAb
<b>Host species</b>	Rabbit
<b>Applications</b>	WB;ELISA
<b>Species Cross-Reactivity</b>	Human;Rat;Mouse;
<b>Recommended dilutions</b>	WB 1:500-2000 ELISA 1:5000-20000
<b>Immunogen</b>	Synthesized peptide derived from part region of human protein
<b>Specificity</b>	FHR1 Polyclonal Antibody detects endogenous levels of protein.
<b>Formulation</b>	Liquid in PBS containing 50% glycerol, 0.5% BSA and 0.02% sodium azide.
<b>Storage</b>	Store at -20°C. Avoid repeated freeze-thaw cycles.
<b>Protein Name</b>	Complement factor H-related protein 1 (FHR-1) (H factor-like protein 1) (H-factor-like 1) (H36)
<b>Gene Name</b>	CFHR1 CFHL CFHL1 CFHL1P CFHR1P FHR1 HFL1 HFL2
<b>Cellular localization</b>	Secreted.
<b>Purification</b>	The antibody was affinity-purified from rabbit antiserum by affinity-chromatography using epitope-specific immunogen.
<b>Clonality</b>	Polyclonal
<b>Concentration</b>	1 mg/ml
<b>Observed band</b>	36kD
<b>Human Gene ID</b>	3078
<b>Human Swiss-Prot Number</b>	Q03591
<b>Alternative Names</b>	
<b>Background</b>	This gene encodes a secreted protein belonging to the complement factor H protein family. It binds to <i>Pseudomonas aeruginosa</i> elongation factor Tuf together with plasminogen, which is proteolytically activated. It is proposed that Tuf acts as a virulence factor by acquiring host proteins to the pathogen surface, controlling complement, and facilitating tissue invasion. Mutations in this gene are

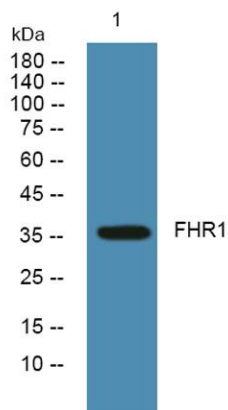




**ELK Biotechnology**

associated with an increased risk of atypical hemolytic-uremic syndrome. [provided by RefSeq, Oct 2009],

Western blot analysis of lysates from PC12 cells, primary antibody was diluted at 1:1000, 4° over night



+86-27-59760950

ELKbio@ELKbiotech.com

www.elkbiotech.com

23-2, No.388 Gaoxin 2nd Road, Wuhan East Lake Hi-tech Development Zone, Hubei, P.R.C