



# ISG15 rabbit pAb

Cat No.:ES11018

For research use only

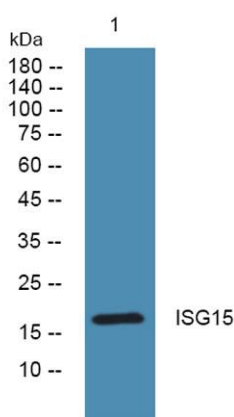
## Overview

<b>Product Name</b>	ISG15 rabbit pAb
<b>Host species</b>	Rabbit
<b>Applications</b>	WB;IHC;IF;ELISA
<b>Species Cross-Reactivity</b>	Human;Mouse
<b>Recommended dilutions</b>	Western Blot: 1/500 - 1/2000. Immunohistochemistry: 1/100 - 1/300. ELISA: 1/5000. Not yet tested in other applications.
<b>Immunogen</b>	Synthesized peptide derived from part region of human protein
<b>Specificity</b>	ISG15 Polyclonal Antibody detects endogenous levels of protein.
<b>Formulation</b>	Liquid in PBS containing 50% glycerol, 0.5% BSA and 0.02% sodium azide.
<b>Storage</b>	Store at -20°C. Avoid repeated freeze-thaw cycles.
<b>Protein Name</b>	Ubiquitin-like protein ISG15 (Interferon-induced 15 kDa protein) (Interferon-induced 17 kDa protein) (IP17) (Ubiquitin cross-reactive protein) (hUCRP)
<b>Gene Name</b>	ISG15 G1P2 UCRP
<b>Cellular localization</b>	Cytoplasm . Secreted . Exists in three distinct states: free within the cell, released into the extracellular space, or conjugated to target proteins.
<b>Purification</b>	The antibody was affinity-purified from rabbit antiserum by affinity-chromatography using epitope-specific immunogen.
<b>Clonality</b>	Polyclonal
<b>Concentration</b>	1 mg/ml
<b>Observed band</b>	18kD
<b>Human Gene ID</b>	9636
<b>Human Swiss-Prot Number</b>	P05161
<b>Alternative Names</b>	
<b>Background</b>	The protein encoded by this gene is a ubiquitin-like protein that is conjugated to intracellular target proteins upon activation by interferon-alpha and

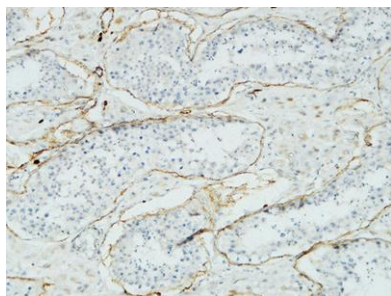




interferon-beta. Several functions have been ascribed to the encoded protein, including chemotactic activity towards neutrophils, direction of ligated target proteins to intermediate filaments, cell-to-cell signaling, and antiviral activity during viral infections. While conjugates of this protein have been found to be noncovalently attached to intermediate filaments, this protein is sometimes secreted. [provided by RefSeq, Dec 2012],



Western blot analysis of lysates from PC12 cells, primary antibody was diluted at 1:1000, 4° over night



Immunohistochemical analysis of paraffin-embedded mouse-liver tissue. 1, ISG15 Polyclonal Antibody was diluted at 1:200 (4° overnight). 2, EDTA pH 9.0 was used for antigen retrieval (>98°C, 20min). 3, Secondary antibody was diluted at 1:200 (room temperature, 3

