



N2DL2 rabbit pAb

Cat No.:ES11017

For research use only

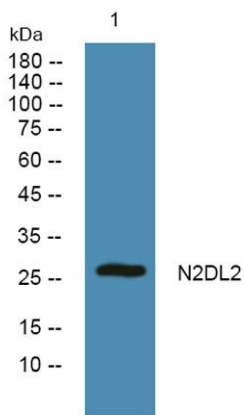
Overview

Product Name	N2DL2 rabbit pAb
Host species	Rabbit
Applications	WB;ELISA
Species Cross-Reactivity	Human;Rat;Mouse;
Recommended dilutions	WB 1:500-2000 ELISA 1:5000-20000
Immunogen	Synthesized peptide derived from part region of human protein
Specificity	N2DL2 Polyclonal Antibody detects endogenous levels of protein.
Formulation	Liquid in PBS containing 50% glycerol, 0.5% BSA and 0.02% sodium azide.
Storage	Store at -20°C. Avoid repeated freeze-thaw cycles.
Protein Name	NKG2D ligand 2 (N2DL-2) (NKG2DL2) (ALCAN-alpha) (Retinoic acid early transcript 1H) (UL16-binding protein 2)
Gene Name	ULBP2 N2DL2 RAET1H UNQ463/PRO791
Cellular localization	Cell membrane ; Lipid-anchor, GPI-anchor . Endoplasmic reticulum . Secreted . In CMV-infected fibroblasts, detected in the endoplasmic reticulum/cis-Golgi. .
Purification	The antibody was affinity-purified from rabbit antiserum by affinity-chromatography using epitope-specific immunogen.
Clonality	Polyclonal
Concentration	1 mg/ml
Observed band	27kD
Human Gene ID	80328
Human Swiss-Prot Number	Q9BZM5
Alternative Names	
Background	This gene encodes a major histocompatibility complex (MHC) class I-related molecule that binds to the NKG2D receptor on natural killer (NK) cells to trigger release of multiple cytokines and





chemokines that in turn contribute to the recruitment and activation of NK cells. The encoded protein undergoes further processing to generate the mature protein that is either anchored to membrane via a glycosylphosphatidylinositol moiety, or secreted. Many malignant cells secrete the encoded protein to evade immunosurveillance by NK cells. This gene is located in a cluster of multiple MHC class I-related genes on chromosome 6. [provided by RefSeq, Jul 2015],



Western blot analysis of lysates from SW480 cells, primary antibody was diluted at 1:1000, 4° over night

