



MFGM rabbit pAb

Cat No.:ES11011

For research use only

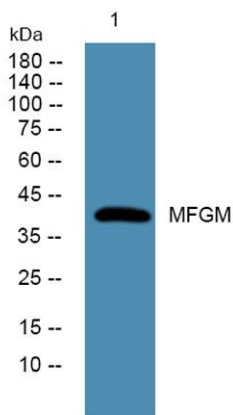
Overview

Product Name	MFGM rabbit pAb
Host species	Rabbit
Applications	WB;ELISA
Species Cross-Reactivity	Human; Mouse;Rat
Recommended dilutions	WB 1:500-2000 ELISA 1:5000-20000
Immunogen	Synthesized peptide derived from part region of human protein
Specificity	MFGM Polyclonal Antibody detects endogenous levels of protein.
Formulation	Liquid in PBS containing 50% glycerol, 0.5% BSA and 0.02% sodium azide.
Storage	Store at -20°C. Avoid repeated freeze-thaw cycles.
Protein Name	Lactadherin (Breast epithelial antigen BA46) (HMFG) (MFGM) (Milk fat globule-EGF factor 8) (MFG-E8) (SED1) [Cleaved into: Lactadherin short form; Medin]
Gene Name	MFGE8
Cellular localization	Membrane ; Peripheral membrane protein . Secreted . Cytoplasmic vesicle, secretory vesicle, acrosome membrane ; Peripheral membrane protein . Located in the acrosomal region of zona-pellucida bound sperm. .
Purification	The antibody was affinity-purified from rabbit antiserum by affinity-chromatography using epitope-specific immunogen.
Clonality	Polyclonal
Concentration	1 mg/ml
Observed band	42kD
Human Gene ID	4240
Human Swiss-Prot Number	Q08431
Alternative Names	
Background	This gene encodes a preproprotein that is proteolytically processed to form multiple protein





products. The major encoded protein product, lactadherin, is a membrane glycoprotein that promotes phagocytosis of apoptotic cells. This protein has also been implicated in wound healing, autoimmune disease, and cancer. Lactadherin can be further processed to form a smaller cleavage product, medin, which comprises the major protein component of aortic medial amyloid (AMA). Alternative splicing results in multiple transcript variants. [provided by RefSeq, Jul 2015],



Western blot analysis of lysates from PC12 cells, primary antibody was diluted at 1:1000, 4° over night

