



FKB1B rabbit pAb

Cat No.:ES11010

For research use only

Overview

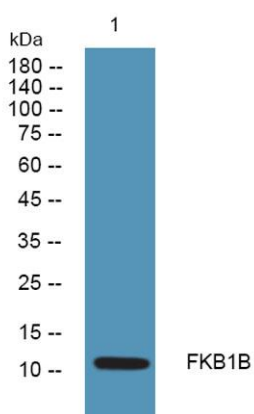
Product Name	FKB1B rabbit pAb
Host species	Rabbit
Applications	WB;ELISA
Species Cross-Reactivity	Human;Rat;Mouse
Recommended dilutions	WB 1:500-2000 ELISA 1:5000-20000
Immunogen	Synthesized peptide derived from part region of human protein AA range: 1-50
Specificity	FKB1B Polyclonal Antibody detects endogenous levels of protein.
Formulation	Liquid in PBS containing 50% glycerol, 0.5% BSA and 0.02% sodium azide.
Storage	Store at -20°C. Avoid repeated freeze-thaw cycles.
Protein Name	Peptidyl-prolyl cis-trans isomerase FKBP1B (PPlase FKBP1B) (EC 5.2.1.8) (12.6 kDa FK506-binding protein) (12.6 kDa FKBP) (FKBP-12.6) (FK506-binding protein 1B) (FKBP-1B) (Immunophilin FKBP12.6) (Rotam
Gene Name	FKBP1B FKBP12.6 FKBP1L FKBP9 OTK4
Cellular localization	Cytoplasm . Sarcoplasmic reticulum .
Purification	The antibody was affinity-purified from rabbit antiserum by affinity-chromatography using epitope-specific immunogen.
Clonality	Polyclonal
Concentration	1 mg/ml
Observed band	11kD
Human Gene ID	2281
Human Swiss-Prot Number	P68106
Alternative Names	
Background	The protein encoded by this gene is a member of the immunophilin protein family, which play a role in immunoregulation and basic cellular processes involving protein folding and trafficking. This encoded protein is a cis-trans prolyl isomerase that





ELK Biotechnology

binds the immunosuppressants FK506 and rapamycin. It is highly similar to the FK506-binding protein 1A. Its physiological role is thought to be in excitation-contraction coupling in cardiac muscle. There are two alternatively spliced transcript variants of this gene encoding different isoforms. [provided by RefSeq, Jul 2008],



Western blot analysis of lysates from A431 cells, primary antibody was diluted at 1:1000, 4° over night



+86-27-59760950

ELKbio@ELKbiotech.com

www.elkbiotech.com

23-2, No.388 Gaoxin 2nd Road, Wuhan East Lake Hi-tech Development Zone, Hubei, P.R.C