



# LY96 rabbit pAb

Cat No.:ES11009

For research use only

## Overview

<b>Product Name</b>	LY96 rabbit pAb
<b>Host species</b>	Rabbit
<b>Applications</b>	WB;ELISA
<b>Species Cross-Reactivity</b>	Human;Mouse
<b>Recommended dilutions</b>	WB 1:500-2000 ELISA 1:5000-20000
<b>Immunogen</b>	Synthesized peptide derived from part region of human protein
<b>Specificity</b>	LY96 Polyclonal Antibody detects endogenous levels of protein.
<b>Formulation</b>	Liquid in PBS containing 50% glycerol, 0.5% BSA and 0.02% sodium azide.
<b>Storage</b>	Store at -20°C. Avoid repeated freeze-thaw cycles.
<b>Protein Name</b>	Lymphocyte antigen 96 (Ly-96) (ESOP-1) (Protein MD-2)
<b>Gene Name</b>	LY96 ESOP1 MD2
<b>Cellular localization</b>	Secreted, extracellular space . Secreted . Retained in the extracellular space at the cell surface by interaction with TLR4 (PubMed:10359581). .
<b>Purification</b>	The antibody was affinity-purified from rabbit antiserum by affinity-chromatography using epitope-specific immunogen.
<b>Clonality</b>	Polyclonal
<b>Concentration</b>	1 mg/ml
<b>Observed band</b>	17kD
<b>Human Gene ID</b>	23643
<b>Human Swiss-Prot Number</b>	Q9Y6Y9
<b>Alternative Names</b>	
<b>Background</b>	This gene encodes a protein which associates with toll-like receptor 4 on the cell surface and confers responsiveness to lipopolysaccharide (LPS), thus providing a link between the receptor and LPS signaling. Studies of the mouse ortholog suggest that this gene may be involved in endotoxin

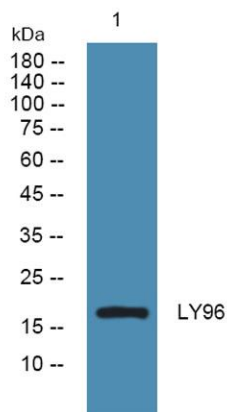




**ELK Biotechnology**

neutralization. Alternative splicing results in multiple transcript variants encoding different isoforms. [provided by RefSeq, Sep 2010],

Western blot analysis of lysates from DU145 cells, primary antibody was diluted at 1:1000, 4° over night



+86-27-59760950

[ELKbio@ELKbiotech.com](mailto:ELKbio@ELKbiotech.com)

[www.elkbiotech.com](http://www.elkbiotech.com)

23-2, No.388 Gaoxin 2nd Road, Wuhan East Lake Hi-tech Development Zone, Hubei, P.R.C