



PINK1 rabbit pAb

Cat No.:ES10983

For research use only

Overview

Product Name	PINK1 rabbit pAb
Host species	Rabbit
Applications	WB;ELISA
Species Cross-Reactivity	Human;Mouse;Rat
Recommended dilutions	WB 1:500-2000 ELISA 1:5000-20000
Immunogen	Synthesized peptide derived from part region of human protein
Specificity	PINK1 Polyclonal Antibody detects endogenous levels of protein.
Formulation	Liquid in PBS containing 50% glycerol, 0.5% BSA and 0.02% sodium azide.
Storage	Store at -20°C. Avoid repeated freeze-thaw cycles.
Protein Name	Serine/threonine-protein kinase PINK1, mitochondrial (EC 2.7.11.1) (BRPK) (PTEN-induced putative kinase protein 1)
Gene Name	PINK1
Cellular localization	Mitochondrion outer membrane ; Single-pass membrane protein . Mitochondrion inner membrane ; Single-pass membrane protein . Cytoplasm, cytosol . Localizes mostly in mitochondrion and the two smaller proteolytic processed fragments localize mainly in cytosol
Purification	The antibody was affinity-purified from rabbit antiserum by affinity-chromatography using epitope-specific immunogen.
Clonality	Polyclonal
Concentration	1 mg/ml
Observed band	63kD
Human Gene ID	65018
Human Swiss-Prot Number	Q9BXM7
Alternative Names	
Background	This gene encodes a serine/threonine protein kinase that localizes to mitochondria. It is thought to

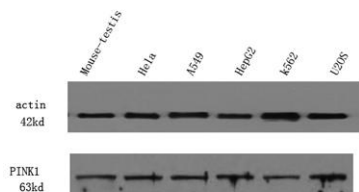




ELK Biotechnology

protect cells from stress-induced mitochondrial dysfunction. Mutations in this gene cause one form of autosomal recessive early-onset Parkinson disease. [provided by RefSeq, Jul 2008],

Western Blot analysis of various cell lysis. Primary Antibody was diluted at 1:1000. Secondary antibody(catalog#:RS23920 was diluted at 1:10000



+86-27-59760950

ELKbio@ELKbiotech.com

www.elkbiotech.com

23-2, No.388 Gaoxin 2nd Road,Wuhan East Lake Hi-tech Development Zone, Hubei , P.R.C