



# XG rabbit pAb

Cat No.:ES10962

For research use only

## Overview

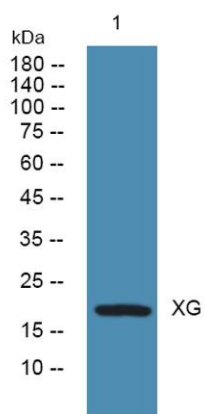
<b>Product Name</b>	XG rabbit pAb
<b>Host species</b>	Rabbit
<b>Applications</b>	WB;ELISA
<b>Species Cross-Reactivity</b>	Human;Rat;Mouse;
<b>Recommended dilutions</b>	WB 1:500-2000 ELISA 1:5000-20000
<b>Immunogen</b>	Synthesized peptide derived from part region of human protein
<b>Specificity</b>	XG Polyclonal Antibody detects endogenous levels of protein.
<b>Formulation</b>	Liquid in PBS containing 50% glycerol, 0.5% BSA and 0.02% sodium azide.
<b>Storage</b>	Store at -20°C. Avoid repeated freeze-thaw cycles.
<b>Protein Name</b>	Glycoprotein Xg (Protein PBDX)
<b>Gene Name</b>	XG PBDX
<b>Cellular localization</b>	Cell membrane ; Single-pass type I membrane protein .
<b>Purification</b>	The antibody was affinity-purified from rabbit antiserum by affinity-chromatography using epitope-specific immunogen.
<b>Clonality</b>	Polyclonal
<b>Concentration</b>	1 mg/ml
<b>Observed band</b>	19kD
<b>Human Gene ID</b>	7499
<b>Human Swiss-Prot Number</b>	P55808
<b>Alternative Names</b>	
<b>Background</b>	This gene encodes the XG blood group antigen, and is located at the pseudoautosomal boundary on the short (p) arm of chromosome X. The three 5' exons reside in the pseudoautosomal region and the remaining exons within the X-specific end. A truncated copy of this gene is found on the Y chromosome at the pseudoautosomal boundary. It is transcribed, but not expected to make a





**ELK Biotechnology**

Y-chromosome specific gene product. Alternatively spliced transcript variants encoding different isoforms have been found for this gene. [provided by RefSeq, Nov 2008],



Western blot analysis of lysates from KB cells, primary antibody was diluted at 1:1000, 4° over night



+86-27-59760950

[ELKbio@ELKbiotech.com](mailto:ELKbio@ELKbiotech.com)

[www.elkbiotech.com](http://www.elkbiotech.com)

23-2, No.388 Gaoxin 2nd Road, Wuhan East Lake Hi-tech Development Zone, Hubei, P.R.C