



CDO1 rabbit pAb

Cat No.:ES10948

For research use only

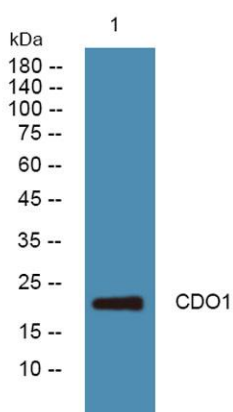
Overview

Product Name	CDO1 rabbit pAb
Host species	Rabbit
Applications	WB;ELISA
Species Cross-Reactivity	Human;Mouse;Rat
Recommended dilutions	WB 1:500-2000 ELISA 1:5000-20000
Immunogen	Synthesized peptide derived from part region of human protein
Specificity	CDO1 Polyclonal Antibody detects endogenous levels of protein.
Formulation	Liquid in PBS containing 50% glycerol, 0.5% BSA and 0.02% sodium azide.
Storage	Store at -20°C. Avoid repeated freeze-thaw cycles.
Protein Name	Cysteine dioxygenase type 1 (EC 1.13.11.20) (Cysteine dioxygenase type I) (CDO) (CDO-I)
Gene Name	CDO1
Cellular localization	cytosol,
Purification	The antibody was affinity-purified from rabbit antiserum by affinity-chromatography using epitope-specific immunogen.
Clonality	Polyclonal
Concentration	1 mg/ml
Observed band	27kD
Human Gene ID	1036
Human Swiss-Prot Number	Q16878
Alternative Names	
Background	catalytic activity:L-cysteine + O(2) = 3-sulfinoalanine.,cofactor:Binds 1 iron ion per subunit. Zinc to a much lesser extent.,cofactor:IRON; NAD(P)H.,function:Initiates several important metabolic pathways related to pyruvate and several sulfurate compounds including sulfate, hypotaurine and taurine. Critical regulator of cellular cysteine concentrations. Has an important role in





maintaining the hepatic concentration of intracellular free cysteine within a proper narrow range.,induction:In hepatoblastoma HepG2 cells, down-regulated by phorbol 12-myristate 13-acetate.,pathway:Organosulfur biosynthesis; taurine biosynthesis; hypotaurine from L-cysteine: step 1/2.,PTM:The thioether cross-link between Cys-93 and Tyr-157 plays a structural role through stabilizing the Fe(2+) ion, and prevents the production of highly damaging free hydroxyl radicals by holding the oxygen radical via hydroxyl hydrogen.,similarity:Belongs to the cysteine dioxygenase family.,subunit:Monomer.,tissue specificity:Highly expressed in liver and placenta. Low expression in heart, brain and pancreas. Also detected in hepatoblastoma HepG2 cells.,



Western blot analysis of lysates from DU145 cells, primary antibody was diluted at 1:1000, 4° over night

