



GPX3 rabbit pAb

Cat No.:ES10932

For research use only

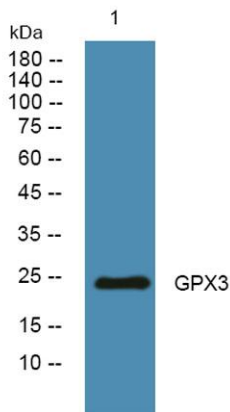
Overview

Product Name	GPX3 rabbit pAb
Host species	Rabbit
Applications	WB;ELISA
Species Cross-Reactivity	Human;Rat;Mouse
Recommended dilutions	WB 1:500-2000 ELISA 1:5000-20000
Immunogen	Synthesized peptide derived from part region of human protein
Specificity	GPX3 Polyclonal Antibody detects endogenous levels of protein.
Formulation	Liquid in PBS containing 50% glycerol, 0.5% BSA and 0.02% sodium azide.
Storage	Store at -20°C. Avoid repeated freeze-thaw cycles.
Protein Name	Glutathione peroxidase 3 (GPx-3) (GSHPx-3) (EC 1.11.1.9) (Extracellular glutathione peroxidase) (Plasma glutathione peroxidase) (GPx-P) (GSHPx-P)
Gene Name	GPX3 GPXP
Cellular localization	Secreted.
Purification	The antibody was affinity-purified from rabbit antiserum by affinity-chromatography using epitope-specific immunogen.
Clonality	Polyclonal
Concentration	1 mg/ml
Observed band	24kD
Human Gene ID	2878
Human Swiss-Prot Number	P22352
Alternative Names	
Background	The protein encoded by this gene belongs to the glutathione peroxidase family, members of which catalyze the reduction of organic hydroperoxides and hydrogen peroxide (H ₂ O ₂) by glutathione, and thereby protect cells against oxidative damage. Several isozymes of this gene family exist in vertebrates, which vary in cellular location and





substrate specificity. This isozyme is secreted, and is abundantly found in plasma. Downregulation of expression of this gene by promoter hypermethylation has been observed in a wide spectrum of human malignancies, including thyroid cancer, hepatocellular carcinoma and chronic myeloid leukemia. This isozyme is also a selenoprotein, containing the rare amino acid selenocysteine (Sec) at its active site. Sec is encoded by the UGA codon, which normally signals translation termination. The 3' UTRs of selenoprotein mRNAs contain a conserved stem-loop structure, designa



Western blot analysis of lysates from A431 cells, primary antibody was diluted at 1:1000, 4° over night

