



OMD rabbit pAb

Cat No.:ES10898

For research use only

Overview

Product Name	OMD rabbit pAb
Host species	Rabbit
Applications	WB;ELISA
Species Cross-Reactivity	Human;Rat;Mouse
Recommended dilutions	WB 1:500-2000 ELISA 1:5000-20000
Immunogen	Synthesized peptide derived from part region of human protein
Specificity	OMD Polyclonal Antibody detects endogenous levels of protein.
Formulation	Liquid in PBS containing 50% glycerol, 0.5% BSA and 0.02% sodium azide.
Storage	Store at -20°C. Avoid repeated freeze-thaw cycles.
Protein Name	Osteomodulin (Keratan sulfate proteoglycan osteomodulin) (KSPG osteomodulin) (Osteoadherin) (OSAD)
Gene Name	OMD SLRR2C UNQ190/PRO216
Cellular localization	Secreted, extracellular space, extracellular matrix .
Purification	The antibody was affinity-purified from rabbit antiserum by affinity-chromatography using epitope-specific immunogen.
Clonality	Polyclonal
Concentration	1 mg/ml
Observed band	46kD
Human Gene ID	4958
Human Swiss-Prot Number	Q99983
Alternative Names	
Background	function:May be implicated in biomineralization processes. Has a function in binding of osteoblasts via the alpha(V)beta(3)-integrin.,PTM: Binds keratan sulfate chains.,similarity:Belongs to the small leucine-rich proteoglycan (SLRP) family. Class II subfamily.,similarity:Contains 12 LRR (leucine-rich) repeats.,subunit: Binds the

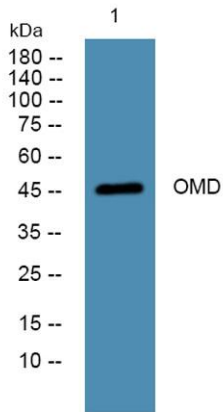




ELK Biotechnology

alpha(V)beta(3)-integrin.,tissue specificity:Bone specific.,

Western blot analysis of lysates from K562 cells, primary antibody was diluted at 1:1000, 4°over night



+86-27-59760950

ELKbio@ELKbiotech.com

www.elkbiotech.com

23-2, No.388 Gaoxin 2nd Road,Wuhan East Lake Hi-tech Development Zone, Hubei , P.R.C