



N2DL3 rabbit pAb

Cat No.:ES10889

For research use only

Overview

Product Name	N2DL3 rabbit pAb
Host species	Rabbit
Applications	WB;ELISA
Species Cross-Reactivity	Human;Rat;Mouse;
Recommended dilutions	WB 1:500-2000 ELISA 1:5000-20000
Immunogen	Synthesized peptide derived from part region of human protein
Specificity	N2DL3 Polyclonal Antibody detects endogenous levels of protein.
Formulation	Liquid in PBS containing 50% glycerol, 0.5% BSA and 0.02% sodium azide.
Storage	Store at -20°C. Avoid repeated freeze-thaw cycles.
Protein Name	NKG2D ligand 3 (N2DL-3) (NKG2DL3) (ALCAN-gamma) (Retinoic acid early transcript 1N)
Gene Name	ULBP3 N2DL3 RAET1N
Cellular localization	Cell membrane ; Lipid-anchor, GPI-anchor .
Purification	The antibody was affinity-purified from rabbit antiserum by affinity-chromatography using epitope-specific immunogen.
Clonality	Polyclonal
Concentration	1 mg/ml
Observed band	26kD
Human Gene ID	79465
Human Swiss-Prot Number	Q9BZM4
Alternative Names	
Background	The protein encoded by this gene is one of several related ligands of the KLRK1/NKG2D receptor, which is found in primary NK cells. Binding of these ligands to the receptor activates several signal transduction pathways, including the JAK2, STAT5, and ERK pathways. The encoded protein is expressed solubly and on the surface of many tumor cells, making it potentially an important target for therapeutics.

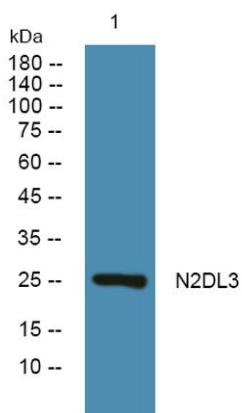




ELK Biotechnology

[provided by RefSeq, Nov 2015],

Western blot analysis of lysates from SH-SY5Y cells,
primary antibody was diluted at 1:1000, 4° over night



+86-27-59760950

ELKbio@ELKbiotech.com

www.elkbiotech.com

23-2, No.388 Gaoxin 2nd Road, Wuhan East Lake Hi-tech Development Zone, Hubei, P.R.C