



UTF1 rabbit pAb

Cat No.:ES10888

For research use only

Overview

Product Name	UTF1 rabbit pAb
Host species	Rabbit
Applications	WB;ELISA
Species Cross-Reactivity	Human;Mouse
Recommended dilutions	WB 1:500-2000 ELISA 1:5000-20000
Immunogen	Synthesized peptide derived from part region of human protein
Specificity	UTF1 Polyclonal Antibody detects endogenous levels of protein.
Formulation	Liquid in PBS containing 50% glycerol, 0.5% BSA and 0.02% sodium azide.
Storage	Store at -20°C. Avoid repeated freeze-thaw cycles.
Protein Name	Undifferentiated embryonic cell transcription factor 1
Gene Name	UTF1
Cellular localization	Nucleus .
Purification	The antibody was affinity-purified from rabbit antiserum by affinity-chromatography using epitope-specific immunogen.
Clonality	Polyclonal
Concentration	1 mg/ml
Observed band	37kD
Human Gene ID	8433
Human Swiss-Prot Number	Q5T230
Alternative Names	
Background	The protein encoded by this gene is a leucine zipper-containing transcriptional coactivator that may link the upstream activator ATF2 with the basal transcription complex. The encoded protein is closely associated with chromatin and is required for the proper differentiation of embryonic carcinoma and embryonic stem cells. Found nearly exclusively in pluripotent cells, this protein can also serve as a

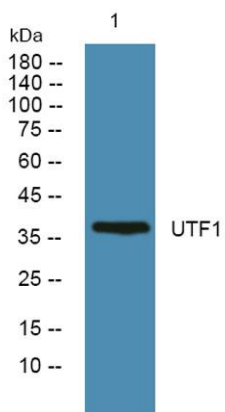




ELK Biotechnology

transcriptional repressor. [provided by RefSeq, Nov 2015],

Western blot analysis of lysates from SW480 cells, primary antibody was diluted at 1:1000, 4° over night



+86-27-59760950

ELKbio@ELKbiotech.com

www.elkbiotech.com

23-2, No.388 Gaoxin 2nd Road, Wuhan East Lake Hi-tech Development Zone, Hubei, P.R.C