



# SLAF7 rabbit pAb

Cat No.:ES10867

For research use only

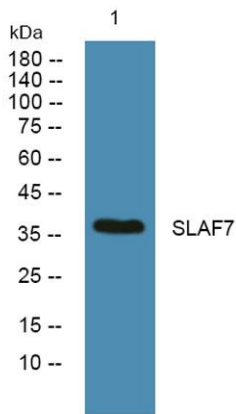
## Overview

<b>Product Name</b>	SLAF7 rabbit pAb
<b>Host species</b>	Rabbit
<b>Applications</b>	WB;ELISA
<b>Species Cross-Reactivity</b>	Human;Mouse
<b>Recommended dilutions</b>	WB 1:500-2000 ELISA 1:5000-20000
<b>Immunogen</b>	Synthesized peptide derived from part region of human protein AA range: 41-90
<b>Specificity</b>	SLAF7 Polyclonal Antibody detects endogenous levels of protein.
<b>Formulation</b>	Liquid in PBS containing 50% glycerol, 0.5% BSA and 0.02% sodium azide.
<b>Storage</b>	Store at -20°C. Avoid repeated freeze-thaw cycles.
<b>Protein Name</b>	SLAM family member 7 (CD2 subset 1) (CD2-like receptor-activating cytotoxic cells) (CRACC) (Membrane protein FOAP-12) (Novel Ly9) (Protein 19A) (CD antigen CD319)
<b>Gene Name</b>	SLAMF7 CS1 UNQ576/PRO1138
<b>Cellular localization</b>	Membrane; Single-pass type I membrane protein.
<b>Purification</b>	The antibody was affinity-purified from rabbit antiserum by affinity-chromatography using epitope-specific immunogen.
<b>Clonality</b>	Polyclonal
<b>Concentration</b>	1 mg/ml
<b>Observed band</b>	36kD
<b>Human Gene ID</b>	57823
<b>Human Swiss-Prot Number</b>	Q9NQ25
<b>Alternative Names</b>	
<b>Background</b>	function:Isoform 1 mediates NK cell activation through a SAP-independent extracellular signal-regulated ERK-mediated pathway. May play a role in lymphocyte adhesion. Isoform 3 does not mediate any activation. SAP can bind the cytoplasmic tail of isoform 1 when phosphorylated





in the presence of Fyn (in vitro).,similarity:Contains 1 Ig-like C2-type (immunoglobulin-like) domain.,tissue specificity:Expressed in spleen, lymph node, peripheral blood leukocytes, bone marrow, small intestine, stomach, appendix, lung and trachea. Expression was detected in NK cells, activated B-cells, NK-cell line but not in promyelocytic, B-, or T-cell lines. The isoform 3 is expressed at much lower level tha isoform 1.,



Western blot analysis of lysates from DU145 cells, primary antibody was diluted at 1:1000, 4°over night

