



# CEAM8 rabbit pAb

Cat No.:ES10857

For research use only

## Overview

<b>Product Name</b>	CEAM8 rabbit pAb
<b>Host species</b>	Rabbit
<b>Applications</b>	WB;ELISA
<b>Species Cross-Reactivity</b>	Human;Rat;Mouse;
<b>Recommended dilutions</b>	WB 1:500-2000 ELISA 1:5000-20000
<b>Immunogen</b>	Synthesized peptide derived from part region of human protein
<b>Specificity</b>	CEAM8 Polyclonal Antibody detects endogenous levels of protein.
<b>Formulation</b>	Liquid in PBS containing 50% glycerol, 0.5% BSA and 0.02% sodium azide.
<b>Storage</b>	Store at -20°C. Avoid repeated freeze-thaw cycles.
<b>Protein Name</b>	Carcinoembryonic antigen-related cell adhesion molecule 8 (CD67 antigen) (Carcinoembryonic antigen CGM6) (Non-specific cross-reacting antigen NCA-95) (CD antigen CD66b)
<b>Gene Name</b>	CEACAM8 CGM6
<b>Cellular localization</b>	Cell membrane ; Lipid-anchor, GPI-anchor . Cell surface .
<b>Purification</b>	The antibody was affinity-purified from rabbit antiserum by affinity-chromatography using epitope-specific immunogen.
<b>Clonality</b>	Polyclonal
<b>Concentration</b>	1 mg/ml
<b>Observed band</b>	38kD
<b>Human Gene ID</b>	1088
<b>Human Swiss-Prot Number</b>	P31997
<b>Alternative Names</b>	
<b>Background</b>	similarity:Belongs to the immunoglobulin superfamily. CEA family.,similarity:Contains 1 Ig-like V-type (immunoglobulin-like) domain.,similarity:Contains 2 Ig-like C2-type (immunoglobulin-like) domains.,tissue

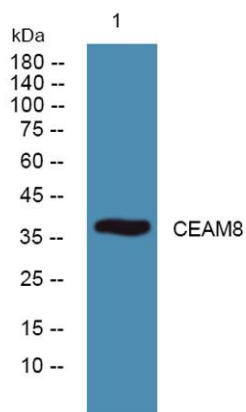




**ELK Biotechnology**

specificity: Expressed in leukocytes of chronic myeloid Leukemia patients and bone marrow.,

Western blot analysis of lysates from K562 cells, primary antibody was diluted at 1:1000, 4° over night



+86-27-59760950

[ELKbio@ELKbiotech.com](mailto:ELKbio@ELKbiotech.com)

[www.elkbiotech.com](http://www.elkbiotech.com)

23-2, No.388 Gaoxin 2nd Road, Wuhan East Lake Hi-tech Development Zone, Hubei, P.R.C