



ACTBM rabbit pAb

Cat No.:ES10855

For research use only

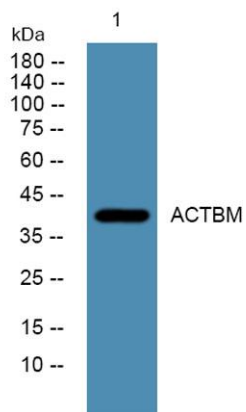
Overview

Product Name	ACTBM rabbit pAb
Host species	Rabbit
Applications	WB;ELISA
Species Cross-Reactivity	Human;Rat;Mouse;
Recommended dilutions	WB 1:500-2000 ELISA 1:5000-20000
Immunogen	Synthesized peptide derived from part region of human protein
Specificity	ACTBM Polyclonal Antibody detects endogenous levels of protein.
Formulation	Liquid in PBS containing 50% glycerol, 0.5% BSA and 0.02% sodium azide.
Storage	Store at -20°C. Avoid repeated freeze-thaw cycles.
Protein Name	Putative beta-actin-like protein 3 (Kappa-actin) (POTE ankyrin domain family member K)
Gene Name	POTEKP ACTBL3 FKSG30
Cellular localization	Cytoplasm, cytoskeleton .
Purification	The antibody was affinity-purified from rabbit antiserum by affinity-chromatography using epitope-specific immunogen.
Clonality	Polyclonal
Concentration	1 mg/ml
Observed band	41kD
Human Gene ID	
Human Swiss-Prot Number	Q9BYX7
Alternative Names	
Background	similarity:Belongs to the actin family.,subunit:Interacts with PFN1 and PFDN1. Does not interact with PFN2.,tissue specificity:Expressed in some hepatocellular carcinomas.,





ELK Biotechnology



Western blot analysis of lysates from HCT116 cells,
primary antibody was diluted at 1:1000, 4° over night



+86-27-59760950

ELKbio@ELKbiotech.com

www.elkbiotech.com

23-2, No.388 Gaoxin 2nd Road, Wuhan East Lake Hi-tech Development Zone, Hubei, P.R.C