

NFE2 rabbit pAb

Cat No.:ES10767

For research use only

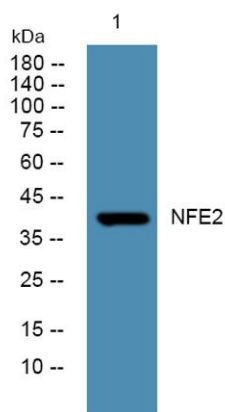
Overview

Product Name	NFE2 rabbit pAb
Host species	Rabbit
Applications	WB;ELISA
Species Cross-Reactivity	Human;Mouse;Rat
Recommended dilutions	WB 1:500-2000 ELISA 1:5000-20000
Immunogen	Synthesized peptide derived from part region of human protein
Specificity	NFE2 Polyclonal Antibody detects endogenous levels of protein.
Formulation	Liquid in PBS containing 50% glycerol, 0.5% BSA and 0.02% sodium azide.
Storage	Store at -20°C. Avoid repeated freeze-thaw cycles.
Protein Name	Transcription factor NF-E2 45 kDa subunit (Leucine zipper protein NF-E2) (Nuclear factor, erythroid-derived 2 45 kDa subunit) (p45 NF-E2)
Gene Name	NFE2
Cellular localization	Nucleus, PML body. Cytoplasm. The sumoylated form locates to the nuclear bodies PML oncogenic domains (PODs). Translocated to the cytoplasm through interaction with ITCH.
Purification	The antibody was affinity-purified from rabbit antiserum by affinity-chromatography using epitope-specific immunogen.
Clonality	Polyclonal
Concentration	1 mg/ml
Observed band	41kD
Human Gene ID	4778
Human Swiss-Prot Number	Q16621
Alternative Names	
Background	function:Required for activity at the locus control region (LCR) upstream of the globin gene complexes. Requires p18 NF-E2 for binding to the NF-E2 motif. May play a role in all aspects of hemoglobin





production: globin synthesis, heme synthesis, and the procurement of iron.,similarity:Belongs to the bZIP family.,similarity:Belongs to the bZIP family. CNC subfamily.,similarity:Contains 1 bZIP domain.,subunit:Interacts with MLL2; leading to activate transcription of the beta-globin locus (By similarity). Heterodimer of p45 NF-E2 and p18 NF-E2. Forms high affinity heterodimer with MAFG; the interaction promotes erythropoiesis.,tissue specificity:Expressed in hematopoietic cells and also in colon and testis.,



Western blot analysis of lysates from U2OS cells, primary antibody was diluted at 1:1000, 4° over night

