



CANT1 rabbit pAb

Cat No.:ES10763

For research use only

Overview

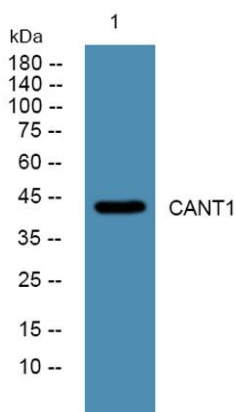
Product Name	CANT1 rabbit pAb
Host species	Rabbit
Applications	WB;ELISA
Species Cross-Reactivity	Human;Mouse
Recommended dilutions	WB 1:500-2000 ELISA 1:5000-20000
Immunogen	Synthesized peptide derived from part region of human protein
Specificity	CANT1 Polyclonal Antibody detects endogenous levels of protein.
Formulation	Liquid in PBS containing 50% glycerol, 0.5% BSA and 0.02% sodium azide.
Storage	Store at -20°C. Avoid repeated freeze-thaw cycles.
Protein Name	Soluble calcium-activated nucleotidase 1 (SCAN-1) (EC 3.6.1.6) (Apyrase homolog) (Putative MAPK-activating protein PM09) (Putative NF-kappa-B-activating protein 107)
Gene Name	CANT1 SHAPY
Cellular localization	Endoplasmic reticulum membrane ; Single-pass type II membrane protein . Golgi apparatus, Golgi stack membrane ; Single-pass type II membrane protein . Cell membrane . Processed form: Secreted.
Purification	The antibody was affinity-purified from rabbit antiserum by affinity-chromatography using epitope-specific immunogen.
Clonality	Polyclonal
Concentration	1 mg/ml
Observed band	44kD
Human Gene ID	124583
Human Swiss-Prot Number	Q8WVQ1
Alternative Names	
Background	calcium activated nucleotidase 1(CANT1) Homo sapiens This protein encoded by this gene belongs to the apyrase family. It functions as a





ELK Biotechnology

calcium-dependent nucleotidase with a preference for UDP. Mutations in this gene are associated with Desbuquois dysplasia with hand anomalies. Alternatively spliced transcript variants have been noted for this gene.[provided by RefSeq, Mar 2010],



Western blot analysis of lysates from SH-SY5Y cells,
primary antibody was diluted at 1:1000, 4°over night



+86-27-59760950

ELKbio@ELKbiotech.com

www.elkbiotech.com

23-2, No.388 Gaoxin 2nd Road,Wuhan East Lake Hi-tech Development Zone, Hubei , P.R.C