



XCL2 rabbit pAb

Cat No.:ES10741

For research use only

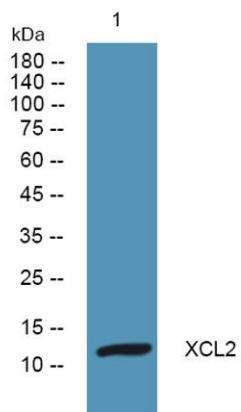
Overview

Product Name	XCL2 rabbit pAb
Host species	Rabbit
Applications	WB;ELISA
Species Cross-Reactivity	Human;Rat;Mouse;
Recommended dilutions	WB 1:500-2000 ELISA 1:5000-20000
Immunogen	Synthesized peptide derived from part region of human protein AA range: 1-50
Specificity	XCL2 Polyclonal Antibody detects endogenous levels of protein.
Formulation	Liquid in PBS containing 50% glycerol, 0.5% BSA and 0.02% sodium azide.
Storage	Store at -20°C. Avoid repeated freeze-thaw cycles.
Protein Name	Cytokine SCM-1 beta (C motif chemokine 2) (XC chemokine ligand 2)
Gene Name	XCL2 SCYC2
Cellular localization	Secreted.
Purification	The antibody was affinity-purified from rabbit antiserum by affinity-chromatography using epitope-specific immunogen.
Clonality	Polyclonal
Concentration	1 mg/ml
Observed band	12kD
Human Gene ID	6846
Human Swiss-Prot Number	Q9UBD3
Alternative Names	
Background	function:Chemotactic activity for lymphocytes but not for monocytes or neutrophils.,online information:XCL2 entry,similarity:Belongs to the intercrine gamma family.,





ELK Biotechnology



Western blot analysis of lysates from K562 cells, primary antibody was diluted at 1:1000, 4° over night



+86-27-59760950

ELKbio@ELKbiotech.com

www.elkbiotech.com

23-2, No.388 Gaoxin 2nd Road, Wuhan East Lake Hi-tech Development Zone, Hubei, P.R.C